



# SUPEX PRODUCTS

[www.supex.com.au](http://www.supex.com.au)



2022 - 2023 CATALOGUE

# WELCOME



## CONTENTS

---

RV ESSENTIALS & ACCESSORIES	6
RV & TRAILER HARDWARE	24
CARAVAN AWNING & ACCESSORIES	34
ENSUITE	44
ELECTRICAL & 12V	48
TENT POLES & SPREADER BARS	58
ROPES & PEGS	70

Welcome to the Supex Products 2022 - 2023 catalogue!

With more than 45 years of experience servicing the leisure industry, the Supex Products team are pleased to share an update on our product range.

As always, we're committed to our customers, our service and our range. It's our mission to serve you as a trusted trade partner, supporting you and your business through consistent, reliable and timely service.

With best regards,

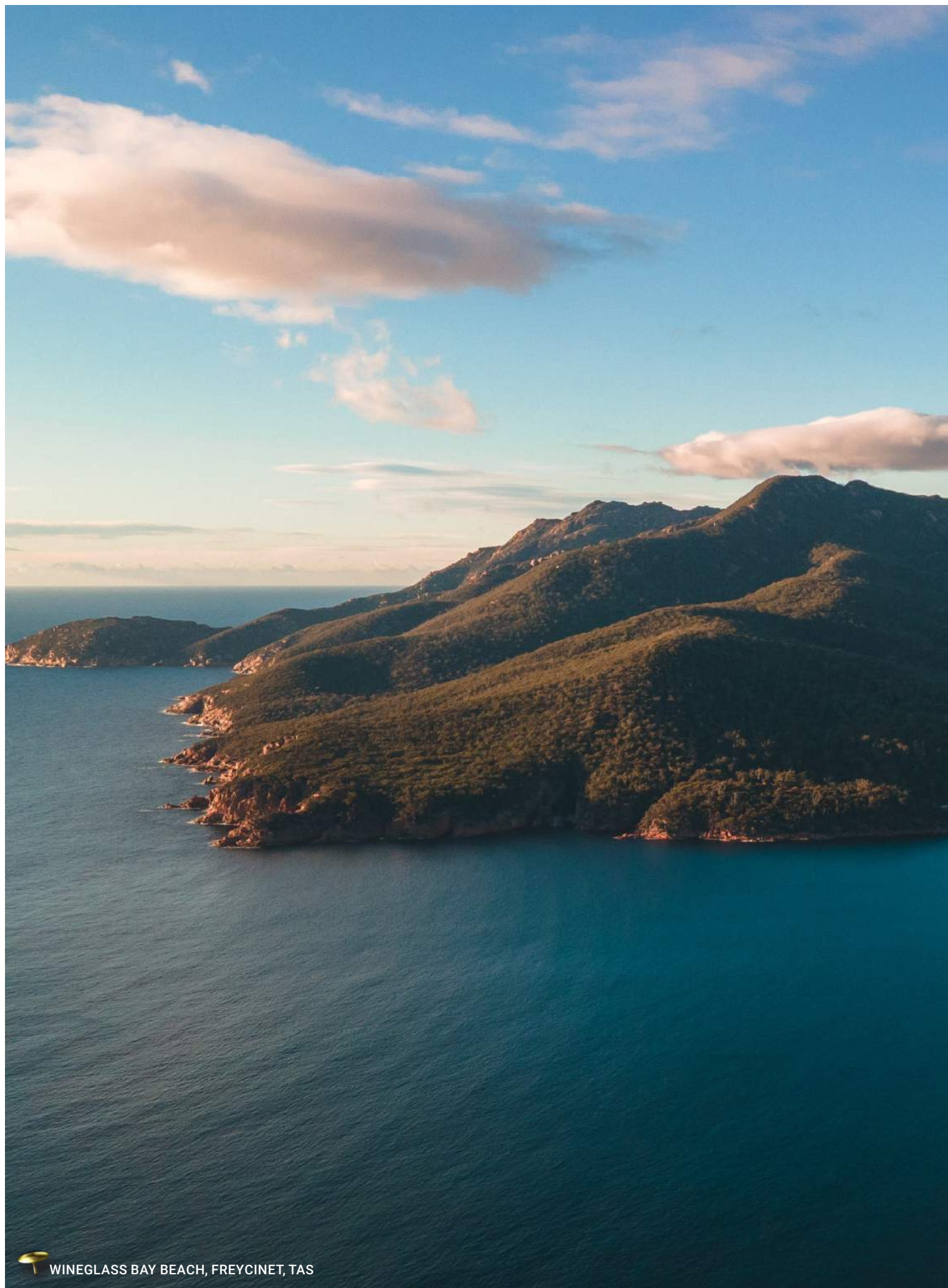
From the team at **SUPEX PRODUCTS**



---

MAINTENANCE & REPAIR	78
BEDDING	84
FURNITURE	88
COOKWARE	94
BEACH & SHELTERS	104
CAMPSITE ACCESSORIES	114
INDEX	118





WINEGLASS BAY BEACH, FREYCINET, TAS





# TOUR & RV

---

RV ESSENTIALS &  
ACCESSORIES  
\_\_\_\_\_ 6

RV & TRAILER  
HARDWARE  
\_\_\_\_\_ 24

CARAVAN AWNING  
& ACCESSORIES  
\_\_\_\_\_ 34

ENSUITE  
\_\_\_\_\_ 44

ELECTRICAL  
& 12V  
\_\_\_\_\_ 48





# RV ESSENTIALS & ACCESSORIES

**WHEEL RAMPS & CHOCKS** \_\_\_\_\_ 7

**CARAVAN HOSE & FITTINGS** \_\_\_\_\_ 8

**RV LEAD & HOSE BAGS** \_\_\_\_\_ 9

**CLOTHES AIRERS** \_\_\_\_\_ 10

**CARAVAN STARTER PACKS** \_\_\_\_\_ 11

**CARAVAN STEPS** \_\_\_\_\_ 12

**COLLAPSIBLES** \_\_\_\_\_ 14

**CARAVAN ANNEXE MATTING** \_\_\_\_\_ 18

**POLE HOLDER** \_\_\_\_\_ 20

**POP TOP SUPPORT** \_\_\_\_\_ 21

**CARAVAN ACCESSORIES** \_\_\_\_\_ 22



# WHEEL RAMPS & CHOCKS

## SINGLE AXLE WHEEL LEVELLING RAMP



**CODE: SRWLS**

- To suit all single axle vans
- Weight Rating: 5 tonnes
- Includes carry bag, two ramps, two chocks

Dimensions:  
560mm (l) x 200mm (w) x 130mm (h)

## DUAL AXLE WHEEL LEVELLING RAMP



**CODE: SRWLD**

- To suit all dual axle vans
- Weight Rating: 5 tonnes
- Includes carry bag, two ramps, two chocks

Dimensions:  
430mm (l) x 195mm (w) x 90mm (h)

## WHEEL CHOCK

**CODE: SRWWCH**



- Wheel chock with rubber grip along base

Dimensions:  
210mm (l) x 120mm (w) x 110mm (h)

## DUAL AXLE WHEEL CHOCK

**CODE: SRWWCHD**



- Interlocking poly wheel chock for tandem wheel caravans
- Separable for single wheel caravans
- Rubber grip along base

Dimensions:  
450mm (l) x 209mm (w) x 119mm (h)

## RV LEVEL BLOCK SET

**CODE: SRWLCHB**



- Six piece set to customise ramp height to suit ground and vehicle
- Includes carry bag
- Made from HDPE and rubber

Dimensions:  
215mm (l) x 215mm (w) x 40mm (h)



# CARAVAN HOSE & FITTINGS

## DRINKING WATER HOSE



- Food grade drinking water hose, 12mm diameter

CODE: DRW10 | 10m coil hose, fittings not included

CODE: DRW20 | 20m coil hose, fittings not included

CODE: DRW10HF | 10m coil hose, fittings included, tap ready

CODE: DRW20HF | 20m coil hose, fittings included, tap ready



- Food grade drinking water hose, black

CODE: DRW1230 | 12mm dia. x 30m coil

CODE: DRW2530 | 25mm dia. x 30m coil



## SULLAGE HOSE



- For effective grey water drainage

- Smooth bore style reduces particle blockage

- Strong, flexible material prevents holes and leaks

CODE: SUL2510 | 25mm dia. x 10m coil

CODE: SUL2810 | 28mm dia. x 10m coil

CODE: SUL3210 | 32mm dia. x 10m coil

CODE: SUL3810 | 38mm dia. x 10m coil



## DRINKING WATER HOSE FITTINGS



1. CODE: HC4035

Hose repairer, 12mm

2. CODE: HC4011

Sprinkler adaptor, 19mm BSP tail

3. CODE: HC4111

Hose connector, 12mm

4. CODE: HC4018

Tap nut adaptor, 19mm and 25mm



5. CODE: HCSETB

Four piece brass hose fitting set; suits 12mm hose

## CARAVAN HOSE & FITTINGS

## RV LEAD & HOSE BAGS

### SULLAGE HOSE FITTINGS



1. CODE: SH25D | Director, 25mm
2. CODE: SH25J | Joiner, 25mm
3. CODE: SH25NT | Nut & tail, 25mm
4. CODE: SH1425D | Director, 14mm/25mm
5. CODE: SH32D | Director, 32mm
6. CODE: SH32NT | Nut & tail, 32mm
7. CODE: SH38NT | Nut & tail, 38mm

8. CODE: SH38J | Joiner, 38mm
9. CODE: SH38D | Director, 38mm
10. CODE: SH4020RN | Reducing nipple, 40mm/20mm
11. CODE: SH4025RN | Reducing nipple, 40mm/25mm
12. CODE: SH4025RB | Reducing bush, 40mm/25mm

13. CODE: SH4032RB | Reducing bush, 40mm/32mm
14. CODE: HCATA | American thread adaptor, 1 1/16"
15. CODE: SHDC25 | Dust cap to suit 25mm tube
16. CODE: SHCAM | CAM fitting, fits 25mm - 38mm

### SMALL HOSE BAG

CODE: SHB



- Small hose bag to suit 10m fresh water hose or 5m sullage hose

Dimensions: 370mm dia.

### LARGE HOSE BAG

CODE: LHB



- Large hose bag to suit 20m fresh water hose or 10m sullage hose

Dimensions: 500mm dia.

### ELECTRICAL LEAD BAG

CODE: LB10



- Holds up to 20m of extension lead

Dimensions: 370mm dia.

# CLOTHES AIRERS

## EASY HANG CLOTHESLINE

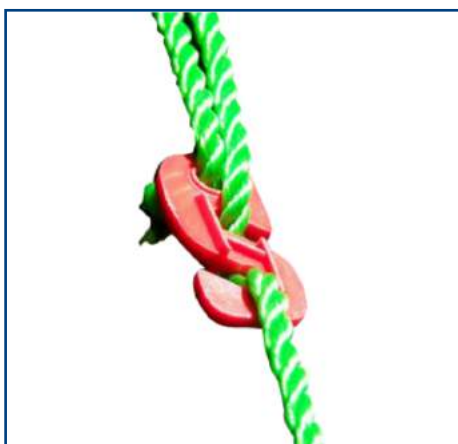


- Stainless steel easy hang clothesline
- Includes one line per pack

CODE: CLSS8 | 8' awning  
 CODE: CLSS9 | 9' awning  
 CODE: CLSS10 | 10' awning  
 CODE: CLSS11 | 11' awning  
 CODE: CLSS12 | 12' awning  
 CODE: CLSS13 | 13' awning  
 CODE: CLSS14 | 14' awning  
 CODE: CLSS15 | 15' awning  
 CODE: CLSS16 | 16' awning  
 CODE: CLSS17 | 17' awning  
 CODE: CLSS18 | 18' awning  
 CODE: CLSS19 | 19' awning  
 CODE: CLSS20 | 20' awning  
 CODE: CLSS21 | 21' awning  
 CODE: CLSS22 | 22' awning  
 CODE: CLSS23 | 23' awning  
 CODE: CLSS24 | 24' awning  
 CODE: CLSS25 | 25' awning

## PEGLESS CLOTHESLINE

CODE: PGLC



- Innovative design that eliminates the need for pegs
- Quick set up, extends to 2m length or folds neatly
- Includes 1 x 2m clothesline, 2 x 550mm heat sealed cords, 1 x stainless steel spring, 1 x Ezyclip tensioner

## FOLDING CLOTHES AIRER

CODE: CD2



- Strong, lightweight aluminium frame with tri-leg design for maximum stability
- Collapsible for easy transportation
- Includes carry bag and ground pegs

Dimensions:  
 Diagonal: 150cm x 150cm (w)  
 Legs: 96cm (w)  
 Assembled: 140 - 145cm (h)



# CARAVAN STARTER PACKS

## CUSTOMISED CARAVAN STARTER PACKS

Customised Caravan Starter Packs designed to suit your van style and your customer's needs.

Develop every aspect of the starter pack, from hose length and diameter, to toilet chemical type and levelling ramp style.

Includes:

- Your choice of products, in the sizes and quantities you wish
- Reusable bag or sturdy storage container as packaging
- Customised label with your own branding

Not sure where to start? Take a look at our pre-designed Starter Packs below:



## STANDARD CARAVAN STARTER PACK

CODE: SCSP



Contains:

- 1 x 10m drinking water hose with fittings
- 1 x 10m sullage hose, 25mm dia.
- 1 x 10m, 15amp caravan lead
- 1 x small hose bag
- 1 x large hose bag
- 1 x electrical lead bag

Comes in a reusable bag or container

## DELUXE CARAVAN STARTER PACK

CODE: DCSP



Contains:

- 1 x 10m drinking water hose with fittings
- 1 x 10m sullage hose, 25mm dia.
- 1 x 10m, 15amp caravan lead
- 1 x small hose bag
- 1 x large hose bag
- 1 x electrical lead bag
- 1 x T-level
- 1 x levelling ramp set

Comes in a reusable bag or container

# CARAVAN STEPS

## PLASTIC FIXED CARAVAN STEP

CODE: STP2



- Durable plastic fixed step
- Weight Rating: 80kg

Dimensions: 345mm (d) x 500mm (w) x 230mm (h)

## ALUMINIUM CARAVAN STEP

CODE: STP3



- Aluminium frame with folding legs
- Non-slip tread
- Weight Rating: 150kg

Dimensions: 300mm (d) x 480mm (w) x 220mm (h)

## HEAVY DUTY ADJUSTABLE STEP

CODE: STP4



- Steel frame with folding legs
- Non-slip tread
- Four stage height adjustment, up to 220mm height
- Weight Rating: 300kg

Dimensions: 370mm (d) x 480mm (w) x 220mm (h)



## TWO STAGE ALUMINIUM STEP

CODE: STP6



- Two stage step, folds flat for easy storage
- Weight Rating: 150kg

Step Dimensions: 225mm (d) x 350mm (w)  
Distance between steps:  
Overall Height: 380mm  
Lower Step Height: 180mm



# CARAVAN STEPS

## TWO STAGE FOLDING STEP

CODE: DBSP



- Two stage folding step with zinc finish
- Weld or bolt on to caravan or camper trailer
- Unit weight: 11kg
- Weight Rating: 150kg

Open Dimensions: 750mm (d) x 535mm (w) x 180mm (h)  
Closed Dimensions: 300mm (d) x 535mm (w) x 180mm (h)

## SINGLE DELUXE CARAVAN STEP

CODE: STP11



- Extra wide floor plates for even pressure distribution
- Weight Rating: 200kg

Dimensions: 470mm (d) x 450mm (w) x 240mm (h)

## DOUBLE DELUXE CARAVAN STEP

CODE: STP12



- Extra wide floor plates for even pressure distribution
- Sliding system for easy storage and transportation
- Weight Rating: 200kg

Dimensions: 740mm (d) x 450mm (w) x 390mm (h)  
Collapsed: 630mm (d)

## OPTIONAL HANDRAIL - TO SUIT STP12

CODE: STP12HR



- Handrail only; *step not included*
- Can be fitted on left or right hand side of Double Deluxe Caravan Step

Dimensions: 610mm (w) x 180cm (h)  
Collapsed Width: 630mm



# COLLAPSIBLE CONTAINERS

## ROUND CONTAINERS - FOUR PACK

CODE: CLP6



- Set of four round containers
- Dishwasher safe
- Collapsed height: 120mm stacked

400mL - 120mm (dia.) x 64mm (h)  
600mL - 140mm(dia) x 64mm (h)  
880mL - 160mm (dia.) x 69mm (h)  
1250mL - 190mm (dia.) x 74mm (h)

## RECTANGLE CONTAINERS - FOUR PACK

CODE: CLP12



- Set of four rectangular containers
- Dishwasher safe
- Collapsed height: 120mm stacked

350mL - 83mm (d) x 118mm (w) x 64mm (h)  
540mL - 93mm (d) x 151mm (w) x 64mm (h)  
800mL - 107mm (d) x 172mm (w) x 64mm (h)  
1200mL - 122mm (d) x 210mm (w) x 74mm (h)

## RECTANGLE CONTAINERS - TWO PACK

CODE: CLP21



- Set of two rectangular containers
- Dishwasher safe
- Collapsed height: 100mm stacked

1500mL - 140mm (d) x 230mm (w) x 70mm (h)  
1800mL - 160mm (d) x 250mm (w) x 70mm (h)

# COLLAPSIBLE FOOD PREP

## COLLAPSIBLE BOWL

CODE: CLP2



- Collapsible bowl for multi-purpose use

Dimensions: 380mm (dia.) x 160mm (h)  
Collapsed height: 50mm

## SINGLE HANDLE COLANDER

CODE: CLP5



- Made from silicone and plastic

Dimensions:  
Handle to tip - 360mm  
Bowl - 230mm (dia.) x 95mm (h)  
Collapsed height: 40mm

## DOUBLE HANDLE COLANDER

CODE: CLP29 - BLUE | CLP30 - GREY



- Dishwasher safe  
- Can be used as a steamer, fits inside 1.5L collapsible saucepan

Dimensions: 200mm (dia.) x 85mm (h)  
Collapsed height: 35mm

## DISH DRAINER

CODE: CLP1



- Made from silicone and plastic

Dimensions: 315mm (d) x 365mm (w) x 125mm (h)  
Collapsed height: 50mm

# COLLAPSIBLE COOKWARE

## COLLAPSIBLE SAUCEPAN



- Collapsible, dishwasher safe saucepan for use on stovetop, hob or cooker
- Anti-slip lid edge design
- Made from stainless steel, silicone and glass
- Collapsed height: 50mm

*Note: Not suitable for induction cooktops*

CODE: CLP13 | Blue, 1L. 160mm (dia.) x 90mm (h) - open

CODE: CLP14 | Blue, 1.5L. 200mm (dia.) x 85mm (h) - open

CODE: CLP15 | Blue, 3L. 240mm (dia.) x 125mm (h) - open

CODE: CLP16 | Grey, 1L. 160mm (dia.) x 90mm (h) - open

CODE: CLP17 | Grey, 1.5L. 200mm (dia.) x 85mm (h) - open

CODE: CLP18 | Grey, 3L. 240mm (dia.) x 125mm (h) - open

## COLLAPSIBLE FRYPAN

CODE: CLP31 - BLUE | CLP32 - GREY



- Collapsible frying pan for use on stovetop, hob or cooker
- Non-stick stainless steel surface with folding handle
- Collapsed height: 58mm

*Note: Not suitable for induction cooktops*

Dimensions: 240mm (dia.) x 85mm (h) - open

## COLLAPSIBLE KETTLE

CODE: CLP19 - BLUE | CLP20 - GREY



- Collapsible, dishwasher safe kettle for use on stovetop, hob or cooker
- Made from stainless steel, silicone and PA
- Collapsed height: 50mm

*Note: Not suitable for induction cooktops*

Volume: 1.2L

Dimensions: 70mm (d) x 195mm (w) x 225mm (h)



# COLLAPSIBLE TUBS & BASKETS

## RECTANGLE DISH

CODE: CLP3



Dimensions:  
270mm (d) x 370mm (w) x 120mm (h)  
Collapsed height: 50mm

## BASIN WITH HANDLES

CODE: CLP9



Dimensions:  
285mm (d) x 380mm (w) x 140mm (h)  
Collapsed height: 50mm

## WASH TUB / SINK

CODE: CLP7



Dimensions:  
300mm (d) x 320mm (w) x 175mm (h)  
Collapsed height: 50mm

## RECTANGLE TUB

CODE: CLP27



Dimensions:  
230mm (d) x 320mm (w) x 205mm (h)  
Collapsed height: 60mm

## BUCKET

CODE: CLP4 | Capacity: 10L



Dimensions:  
330mm (dia.) x 250mm (h)  
Collapsed height: 50mm

## SMALL BASKET

CODE: CLP8



Dimensions:  
375mm (d) x 500mm (w) x 205mm (h)  
Collapsed height: 60mm

## LARGE BASKET

CODE: CLP28



Dimensions:  
460mm (d) x 610mm (w) x 270mm (h)  
Collapsed height: 85mm

# CARAVAN ANNEXE MATTING

## CARAVAN ANNEXE MATTING

Premium quality, heavy duty annexe matting for use under caravan and camper trailer annexes. The design provides comfort underfoot and allows sand and dirt to fall through whilst ensuring minimal damage to grass underneath.

- Low maintenance; shake and wipe clean
- Non-slip, UV resistant design
- Mould and mildew resistant
- Manufactured from PVC foam mesh
- Includes carry bag

Available in three colours: Grey, Green, Blue



 GREY



 GREEN



 BLUE

CODE: FC1 | Roll; 2.50m (w) x 30m (l)

CODE: FC2 | 2.50m (w) x 3.00m (l)

CODE: FC3 | 2.50m (w) x 3.50m (l)

CODE: FC4 | 2.50m (w) x 4.00m (l)

CODE: FC5 | 2.50m (w) x 4.50m (l)

CODE: FC6 | 2.50m (w) x 5.00m (l)

CODE: FC7 | 2.50m (w) x 5.50m (l)

CODE: FC8 | 2.50m (w) x 6.00m (l)

CODE: FC9 | 2.50m (w) x 7.00m (l)

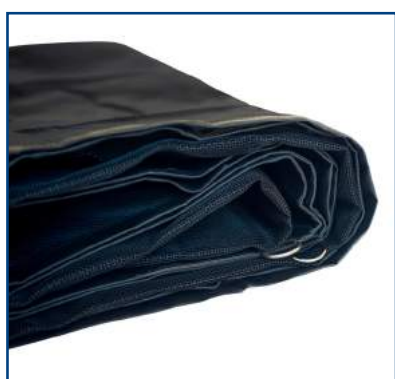


# CARAVAN ANNEXE MATTING

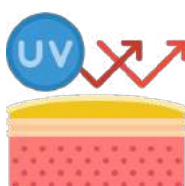
## SUREMAT

The ultimate, multi-purpose matting for caravanning, annexe flooring and campsite covering. SureMat is fabricated with a superior, dynamic weave. Manufactured with strong, lightweight material, this matting also features special anti-slipping properties.

- Can be used with or without peg fastening
- Easy care and low maintenance, simply shake off dirt and wipe clean if necessary
- Environmentally friendly with innovative, breathable design allowing grass to thrive underneath
- UV resistant
- Mould and mildew resistant
- Includes tent pegs and carry bag



CODE: SMAT3 | 2.45m (w) x 3.00m (l)  
CODE: SMAT4 | 2.45m (w) x 4.00m (l)  
CODE: SMAT5 | 2.45m (w) x 5.00m (l)  
CODE: SMAT6 | 2.45m (w) x 6.00m (l)



UV RESISTANT



EASY CARE



MOULD & MILDEW  
RESISTANT



ENVIRONMENT  
FRIENDLY

# POLE HOLDER

## POLE HOLDER

- Heavy duty plastic pole holder for tent poles, anti-flap kits and fishing rods
- Easily lockable on both ends; remove the Quik clips and add padlocks
- Can be fitted to vehicle roof rack
- Mounting brackets included
- Made from UPVC
- Four sizes available

CODE: PC160 | 150mm (dia.) x 1.60m (l)

CODE: PC180 | 150mm (dia.) x 1.80m (l)

CODE: PC200 | 150mm (dia.) x 2.00m (l)

CODE: PC220 | 150mm (dia.) x 2.20m (l)



PC220 suitable  
for assembled  
Secura Bar



# POP TOP SUPPORT

## MOUNTING BRACKETS

CODE: PCMBS



- Mounting brackets for pole carrier
- Comes ready to bolt on to 100mm or 150mm chassis of caravan or camper trailer
- Suits 150mm dia. tubing
- Made from zinc plated steel
- Sold as a pair

## POP TOP SUPPORT BAR

CODE: PTS | 22-25mm dia. x 1.2WT white finish - max. 50cm

CODE: PTS2 | 22-25mm dia. x 1.2WT white finish - max. 60cm



## POP TOP SUPPORT BAR DISPLAY BOX

CODE: PTSDB

- Cardboard display box
- Includes 14 x 50cm Pop Top Supports

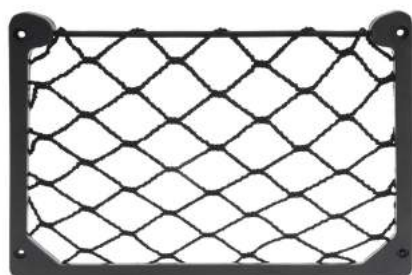




# CARAVAN ACCESSORIES

## MAGAZINE HOLDER

CODE: MGZH



- Storage solution for magazines and books
- Fastens onto the back of RV shelving
- Plastic frame with 5mm dia. elastic rope
- Screws included

Dimensions:  
355mm (w) x 185mm (h)

## CARAVAN SINK PLUG

CODE: SRCSP25 | Caravan Sink Plug  
CODE: SRCSP25P | Hang Sell Pack



- Made from soft rubber

Dimensions:  
25mm dia.

## T LEVEL

CODE: CL1



- Made from UV resistant high impact plastic

Dimensions:  
60mm (l) x 45mm (w) x 15mm (d)

## TOWING MIRRORS

CODE: CTM1 | Clip On Towing Mirror  
CODE: CTM2 | Easy Fit Towing Mirror



### CTM1 | CLIP ON TOWING MIRROR

- Caravan towing mirror clips onto existing mirror
- Mounts on left or right hand side
- Adjustable strap
- One per pack



### CTM2 | EASY FIT TOWING MIRROR

- Easy fit fully adjustable towing mirror
- Mounts on left or right hand side
- Ratchet system reduces vibration, increases stability
- Extra large size
- One per pack

# CARAVAN ACCESSORIES

## FIRST AID KIT

CODE: FIAIK



- Includes the essentials for treating minor injuries
- Contained in a reinforced fabric bag suited to various environments
- Protection against water and dust
- Complies with AS 2675-1983 Portable First Aid Kits for Use by Consumers

Dimensions:  
90mm (d) x 140mm (w) x 110mm (h)

## CARAVAN FILTER

CODE: SRCR20



- Portable caravan inline water filter with brass hose connectors
- Easily connects to your caravan or motor home
- Incorporates carbon filtration with SilverPlus™ antibacterial technology
- Inhibits bacteria growth and removes unwanted taste, odours and chemicals

Specifications:  
Rating: 1 micron  
Dimensions: 70mm (dia.) x 300mm (h)  
Connection: garden hose 1/2"  
Min/max hose flow: 0 - 20 litres per minute  
Min/max temperature: 2° - 38°  
Min/max pressure: 200 - 860 kPa

## SINK HAND PUMP

CODE: SHP1



- Manual pump for RV's
- Double action operation for water on up and down strokes
- Self priming, releases water at any time
- Manufactured from corrosion resistant nylon with polyurethane interior seals and an anodised aluminium barrel
- Includes bonus repair kit

Specifications:  
Pump extends 97mm above bench top  
Spout extends 140mm from centreline of pump  
Maximum bench thickness - 25mm  
Bench top to hose fitting distance - 185mm

# RV & TRAILER HARDWARE

JOCKEY WHEELS 25

JOCKEY WHEEL ACCESSORIES 27

ADJUSTABLE STANDS 28

ADJUSTABLE CARAVAN LEGS 28

ADJUSTABLE ACCESSORIES 29

ADJUSTABLE LEG ACCESSORIES 30

TRAILER ACCESSORIES 31

JERRY CAN HOLDERS 32

GAS BOTTLE HOLDERS 33



# JOCKEY WHEELS

## ECONOMY JOCKEY WHEEL

CODE: JW1E



- Solid rubber wheel with nylon web bore
- Includes clamp
- Unit Weight: 5.2kg
- Static Load Capacity: 500kg

Dimensions:

Wheel - 150mm x 50mm (6" x 2")  
Lift - 225mm

## EXTRA HEIGHT JOCKEY WHEEL

CODE: JW1EH



- Solid rubber wheel with nylon web bore
- Includes clamp
- Unit Weight: 6.2kg
- Static Load Capacity: 500kg

Dimensions:

Wheel - 150mm x 50mm (6" x 2")  
Lift - 225mm

## ECONOMY SWIVEL JOCKEY WHEEL

CODE: JW2E



- Solid rubber wheel with nylon web bore
- With pin locking swivel bracket welded in position
- Unit Weight: 6.0kg
- Static Load Capacity: 350kg

Dimensions:

Wheel - 150mm x 50mm (6" x 2")  
Lift - 225mm

## ECONOMY SWIVEL JOCKEY WHEEL

CODE: JW2UBE



- Solid rubber wheel with nylon web bore
- With pin locking swivel bracket welded in position
- For fixing with U-Bolts (suits 2", 3", 4", 5" & 6" U-Bolts)
- Unit Weight: 6.2kg
- Static Load Capacity: 350kg

Dimensions:

Wheel - 150mm x 50mm (6" x 2")  
Lift - 225mm

## MEDIUM JOCKEY WHEEL

CODE: JW4Z



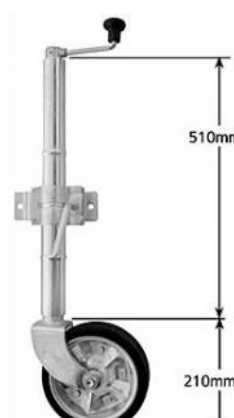
- Rubber tyre with zinc plated steel centre and roller bearings
- Includes clamp
- Unit Weight: 6.6kg
- Static Load Capacity: 750kg

Dimensions:

Wheel - 200mm x 55mm (8" x 2")  
Lift - 225mm

## EXTRA HEIGHT JOCKEY WHEEL

CODE: JW4ZEH



- Rubber tyre with zinc plated steel centre and roller bearings
- Includes clamp
- Unit Weight: 8.5kg
- Static Load Capacity: 700kg

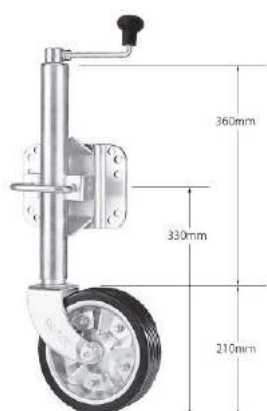
Dimensions:

Wheel - 200mm x 55mm (8" x 2")  
Lift - 225mm

# JOCKEY WHEELS

## MEDIUM SWIVEL JOCKEY WHEEL

CODE: JW4ZUB



- Rubber tyre with zinc plated steel centre and roller bearings
- With pin locking swivel bracket welded in position
- For fixing with U-Bolts (suits 2", 3", 4", 5" & 6" U-Bolts)
- Unit Weight: 9.6kg
- Static Load Capacity: 750kg

Dimensions:

Wheel - 200mm x 55mm (8" x 2")  
Lift - 225mm

## EXTRA HEIGHT JOCKEY WHEEL

CODE: JW9EHD



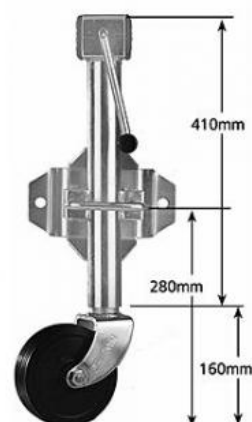
- Solid cushion tyre with steel centre and bronze bush bore
- 'Pneumatic Look' solid rubber
- Increased capacity; includes H/D clamp
- Unit Weight: 12.2kg
- Static Load Capacity: 850kg

Dimensions:

Wheel - 4.10 / 3.50 x 4 (10")  
Lift - 225mm

## STANDARD SWIVEL JOCKEY WHEEL

CODE: JWSW-2



- Solid rubber with nylon web bore
- Side winding with pin locking swivel bracket welded in position
- Unit Weight: 7.5kg
- Static Load Capacity: 500kg

Dimensions:

Wheel - 150mm x 50mm (6" x 2")  
Lift - 225mm

## SWIVEL JOCKEY WHEEL

CODE: JW10S



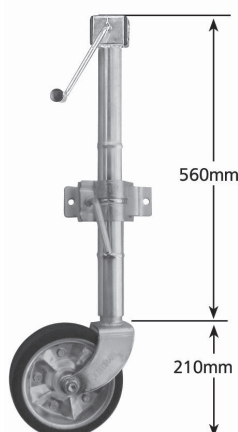
- Solid cushion tyre with steel centre and bronze bush bore
- 'Pneumatic Look' solid rubber
- With pin locking swivel bracket welded in position
- Unit Weight: 11.1kg
- Static Load Capacity: 850kg

Dimensions:

Wheel - 4.10 / 3.50 x 4 (10")  
Lift - 225mm

## EXTRA HEIGHT JOCKEY WHEEL

CODE: JWSW-4ZEH



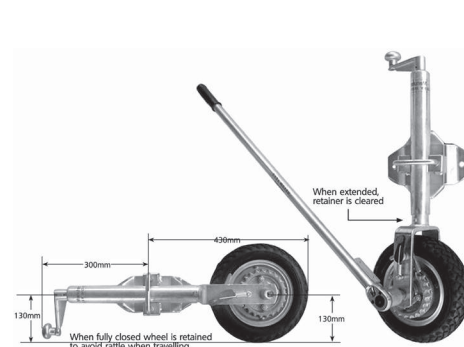
- Rubber tyre with zinc plated steel centre and roller bearings
- Side winding; includes clamp
- Unit Weight: 8.6kg
- Static Load Capacity: 700kg

Dimensions:

Wheel - 200mm x 55mm (8" x 2")  
Lift - 225mm

## RATCHET DRIVEN SOLID RUBBER JOCKEY WHEEL

CODE: EM1SP



- Solid cushion tyre with steel centre and bronze bush bore
- With pin locking swivel bracket welded in position
- Unit Weight: 16.5kg
- Static Load Capacity: 750kg

Dimensions:

Wheel - 4.10 / 3.50 x 4 (10")  
Lift - 225mm

# JOCKEY WHEEL ACCESSORIES

## LARGE JOCKEY WHEEL HOLDER

CODE: SRWJCH



- Can be pegged to the ground

Dimensions:  
204mm (dia.) x 35mm (h)

## RUBBER WHEEL HOLDER

CODE: RWH



- Support cradle for use under jockey wheel for 150mm and 200mm wheels  
- Unit Weight: 0.55kg

Dimensions:  
170mm (l) x 130mm (w) x 40mm (h)

## LARGE RUBBER WHEEL HOLDER

CODE: RWHL



- Support cradle for use under 200mm and 250mm jockey wheels

Dimensions:  
200mm (l) x 130mm (w) x 50mm (h)

## SOLID RUBBER WHEEL

CODE: JWSRW



- Suits standard jockey wheel  
- Unit Weight: 0.97kg

Dimensions:  
150mm (dia.) with 13mm nylon web bore

## RUBBER TYRE

CODE: RT



- Zinc steel centre finish  
- 16mm roller bearing

Dimensions:  
200mm dia.

## HANDLE ROLL PIN

CODE: JWHRP



- Suits most standard jockey wheels  
- Unit Weight: 0.24kg

## CLAMP

CODE: JWCL1



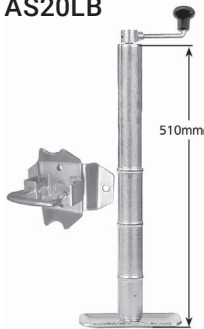
- Clamp for jockey wheel  
- Suits up to 50mm dia. shank



## ADJUSTABLE STANDS

### STANDARD ADJUSTABLE STAND

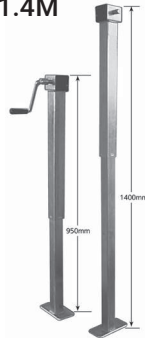
CODE: AS20LB



- With pin locking swivel bracket
- Bracket supplied loose
- Lift: 225mm
- Unit Weight: 6.7kg
- Static Load Capacity: 650kg

### MEDIUM DUTY ADJUSTABLE STAND

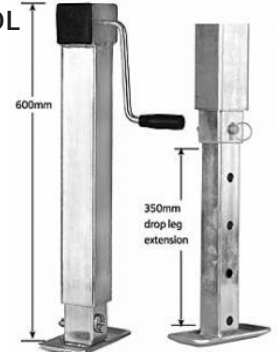
CODE: ASSW1.4M



- Side winding with loose handle
- Lift: 350mm
- Unit Weight: 15.5kg
- Static load capacity: 1000kg

### HEAVY DUTY ADJUSTABLE STAND

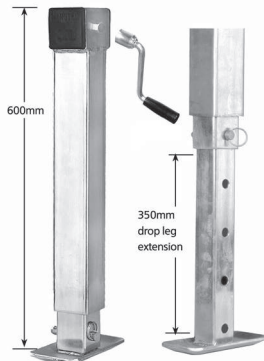
CODE: ASSW-DL



- Side winding with drop leg
- Lift: 350mm
- Unit Weight: 11.8kg
- Static Load Capacity: 1500kg

### HEAVY DUTY ADJUSTABLE STAND

CODE: ASSW-DLLH  
WITH LOOSE HANDLE



- As ASSW-DL, with loose handle

### FRONT ADJUSTABLE LEG

CODE: ALFP6



- Weld on
- Front; no wheel
- Power thread, slotted type handle fitment
- Unit Weight: 3.6kg
- Length: 600mm

### REAR ADJUSTABLE LEG

CODE: ALRP5



- Weld on
- Rear with wheel
- Power thread, slotted type handle fitment
- Unit Weight: 3.5kg
- Length: 500mm

### EXTRA LARGE ADJUSTABLE LEG - STEEL FOOT

CODE: ALQR4LP | Zinc plated finish  
CODE: ALQR4LP-HT | Hammertone finish



- Weld on
- Unit Weight: 6.2kg
- Height: 620mm
- Lift: 180mm

### MOUNTING TUBES

CODE: AS-MT



- Swivel for adjustable stands
- Unit Weight: 0.9kg
- Static Load Capacity: 1000kg

## ADJUSTABLE CARAVAN LEGS

## ADJUSTABLE ACCESSORIES

### SMALL ADJ. LEG WITH PLASTIC FOOT

CODE: ALQR1 | Zinc plated finish  
CODE: ALQR1-HT | Hammertone finish



- Weld on
- Unit Weight: 4.7kg
- Height: 400mm
- Lift: 120mm

### MEDIUM ADJ. LEG WITH PLASTIC FOOT

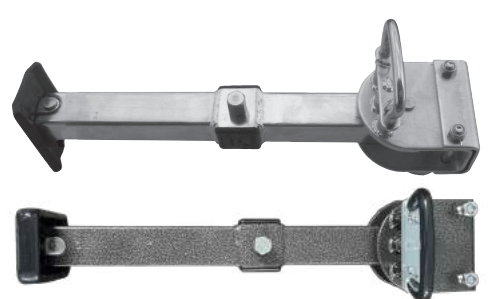
CODE: ALQR2 | Zinc plated finish  
CODE: ALQR2-HT | Hammertone finish



- Weld on
- Unit Weight: 5.1kg
- Height: 460mm
- Lift: 180mm

### LARGE ADJ. LEG WITH PLASTIC FOOT

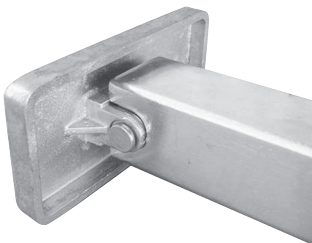
CODE: ALQR3 | Zinc plated finish  
CODE: ALQR3-HT | Hammertone finish



- Weld on
- Unit Weight: 5.7kg
- Height: 520mm
- Lift: 140mm

### SMALL ADJ. LEG WITH ALUMINIUM FOOT

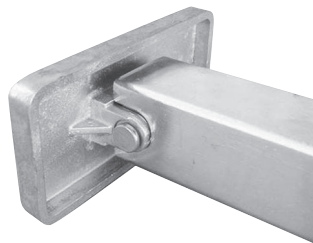
CODE: ALQR1-AF



- Unit Weight: 4.7kg
- Height: 400mm
- Lift: 120mm

### MEDIUM ADJ. LEG WITH ALUMINIUM FOOT

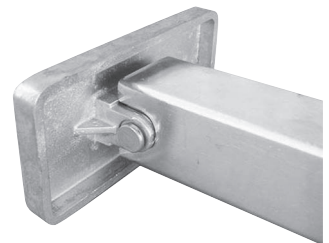
CODE: ALQR2-AF



- Unit Weight: 5.1kg
- Height: 460mm
- Lift: 180mm

### LARGE ADJ. LEG WITH ALUMINIUM FOOT

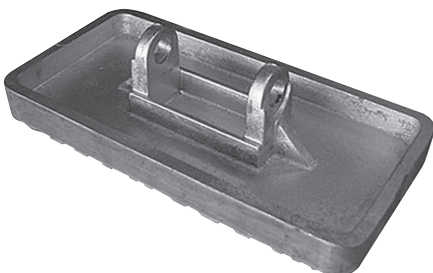
CODE: ALQR3-AF



- Unit Weight: 5.7kg
- Height: 520mm
- Lift: 140mm

### ALUMINIUM FOOT

CODE: ALQRAF | Suits ALQR leg



### PLASTIC FOOT

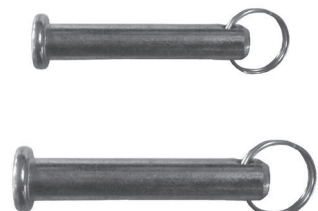
CODE: ALQRPF | Suits ALQR leg



### PIN FOR REPLACEMENT FOOT

CODE: ALQRPS | Small pin to suit plastic covered feet

CODE: ALQRPL | Large pin to suit aluminium feet



# ADJUSTABLE LEG ACCESSORIES

## P SERIES HANDLE

CODE: LH2P | LH2PD



**LH2P**

- Slotted type

- Length: 700mm

- Weight: 680g



**LH2PD**

- Slotted type

- Drill Style

- Length: 570mm

- Weight: 500g

## CARAVAN JACK PAD

CODE: SRWJ



- Four piece set

Dimensions:

180mm (d) x 140mm (w) x 50mm (h)

## HEX HEAD HANDLE

CODE: LH2M | LH2MD



**LH2M**

- Hex head type

- Length: 700mm

- Weight: 840g



**LH2MD**

- Hex head type

- Drill Style

- Length: 590mm

- Weight: 600g

## JACK PAD STACKER

CODE: SRWJP



- Four piece set

Dimensions:

145mm (d) x 145mm (w) x 40mm (h)



# TRAILER ACCESSORIES

## A TYPE BEARING SET

CODE: MLMAJ



- Japanese; similar to Holden
- Includes small & large bearing, large cup, large cone, A type seal

## B TYPE BEARING SET

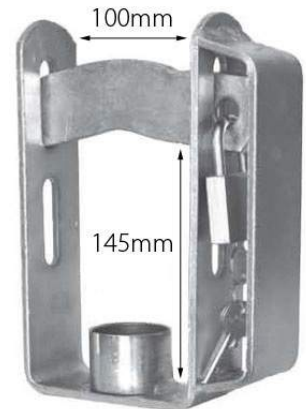
CODE: MLMBJ



- Japanese slimline or heavy duty bearings, similar to Ford car bearings
- Includes small & large bearing, large cup, large cone, B type seal

## TWIN COUPLING LOCK

CODE: TCL



- Twin coupling lock complete with 38mm brass padlock
- Unit weight: 1.86kg

## D - SHACKLES

CODE: DS1 | Small

CODE: DS2 | Medium

CODE: DS3 | Large



DS1

- 1000kg WLL rated; ADR Approved
- 10mm

DS2

- 1500kg WLL rated; ADR Approved
- 11mm

DS3

- 2000kg WLL rated; ADR Approved
- 13mm

## BOW SHACKLES

CODE: BSH1 | Small

CODE: BSH2 | Medium

CODE: BSH3 | Large



BSH1

- 1000kg WLL rated; ADR Approved
- 10mm

BSH2

- 1500kg WLL rated; ADR Approved
- 11mm

BSH3

- 2000kg WLL rated; ADR Approved
- 13mm

# JERRY CAN HOLDERS

## JERRY CAN HOLDER

CODE: JCHD

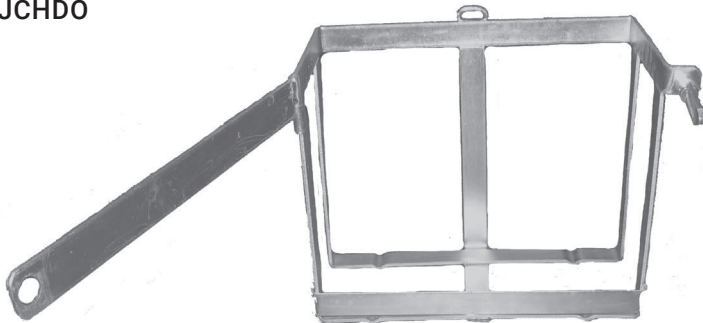


- Zinc plated finish
- Weld on style / metal strap
- Unit Weight: 3.0kg

Inside Dimensions:  
180mm (d) x 370mm (w) x 295mm (h)

## JERRY CAN HOLDER - FRONT OPENING

CODE: JCHDO



- Zinc plated finish
- Weld on style / metal strap
- Unit Weight: 3.4kg

Inside Dimensions:  
180mm (d) x 370mm (w) x 295mm (h)

## JERRY CAN HOLDER - WITH SIDE FLANGES & HAMMERTONE FINISH

CODE: JCHD-SF



- Hammertone finish
- Bolt on style / with side flanges
- Unit Weight: 6.0kg

## JERRY CAN HOLDER - NO SIDE FLANGES & HAMMERTONE FINISH

CODE: JCHD-NSF

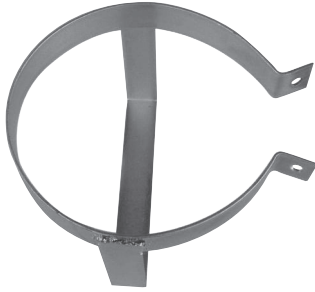


- Hammertone finish
- Bolt on style / no side flanges
- Unit Weight: 6.0kg

# GAS BOTTLE HOLDERS

## SMALL GAS BOTTLE HOLDER

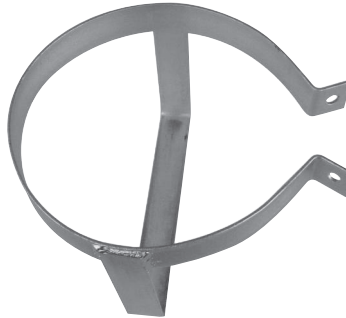
CODE: GBHDS



- To suit 4.0kg - 4.5kg gas bottle
- Zinc plated finish
- Weld on style
- Unit Weight: 1.4kg

## MEDIUM GAS BOTTLE HOLDER

CODE: GBHDM



- To suit 5.0kg 'squat' gas bottle
- Zinc plated finish
- Weld on style
- Unit Weight: 1.47kg

## LARGE GAS BOTTLE HOLDER

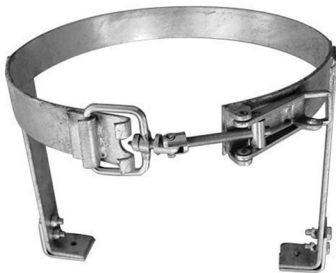
CODE: GBHDL



- To suit 9.0kg gas bottle
- Zinc plated finish
- Weld on style
- Unit Weight: 1.6kg

## SMALL, ADJUSTABLE

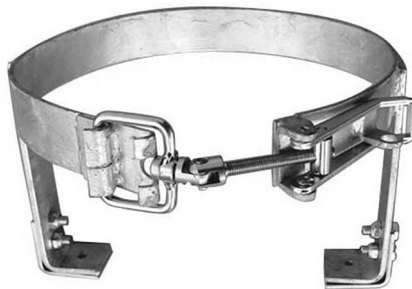
CODE: AGBHS



- To suit 4.0kg gas bottle
- Zinc plated finish
- Mount brackets for weld on
- Galvanised holder bolted to brackets for easy replacement
- Fully adjustable and lockable
- Unit Weight: 1.86kg

## MEDIUM, ADJUSTABLE

CODE: AGBHL



- To suit 9.0kg gas bottle
- Zinc plated finish
- Mount brackets for weld on
- Galvanised holder bolted to brackets for easy replacement
- Fully adjustable and lockable
- Unit Weight: 2.36kg

## RUBBER RING

CODE: AGBHS-RR | Small

CODE: AGBHL-RR | Large



- Place around metal ring of Gas Bottle Holder to prevent chafing and wear & tear
- 100% rubber ring, black
- Available to suit sizes small and large

*Note: Gas Bottle Holder not included*

## ADJUSTABLE GAS BOTTLE HOLDER - FRONT OPENING

CODE: AGBHSO | SMALL

- Suits: 4.0kg gas bottle
- Weld on style
- Unit Weight: 1.86kg



CODE: AGBHLO | LARGE

- Suits: 9.0kg gas bottle
- Weld on style
- Unit Weight: 2.0kg





# CARAVAN AWNING & ACCESSORIES

SECURA BAR \_\_\_\_\_ 35

CURVED ROOF RAFTER \_\_\_\_\_ 36

SECURA BAR & CURVED ROOF  
RAFTER SPARE PARTS \_\_\_\_\_ 37

CARAVAN AWNING ACCESSORIES \_\_\_\_\_ 38

PRIVACY SCREENS \_\_\_\_\_ 41



# SECURA BAR

## SUPEX AWNING SECURA BAR

The Supex Products Secura Bar allows you to attach your annexe to a roll out awning. The bar adds stability, preventing the awning from excessive movement in driving wind or rain.

### WHITE

CODE: ASWS | Small, Extendable Length: 210cm - 220cm

CODE: ASWM | Medium, Extendable Length: 220cm - 230cm

CODE: ASWL | Large, Extendable Length: 230cm - 240cm



### BLACK

CODE: ASBS | Small, Extendable Length: 210cm - 220cm

CODE: ASBM | Medium, Extendable Length: 220cm - 230cm

CODE: ASBL | Large, Extendable Length: 230cm - 240cm



## CURVED ROOF RAFTER



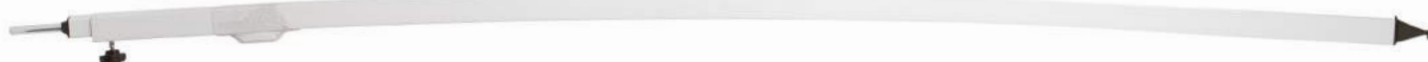
Available  
with clip ends  
*\*on request*



### POWDERCOATED ALUMINIUM CURVED ROOF RAFTER, WHITE

CODE: 563V | Slight curve, max. length: 243cm (8ft)

CODE: 563VA | Acute curve, max. length: 243cm (8ft)



### POWDERCOATED ALUMINIUM CURVED ROOF RAFTER, BLACK

CODE: 563VB | Slight curve, max. length: 243cm (8ft)

CODE: 563VAB | Acute curve, max. length: 243cm (8ft)





# SECURA BAR & CURVED ROOF RAFTER SPARE PARTS

## ROOF RAFTER END

CODE: 563RE



- Stainless steel roof rafter end
- Also suits Supex Secura Bar

## T-NUT & THUMBSCREW

CODE: 563TS



- Black plastic turning knob with stainless steel T-nut
- Suits Supex Curved Roof Rafter & Supex Secura Bar

## CURVED ROOF RAFTER SPIGOT END

CODE: 563SP



- Steel spigot end in moulded black plastic base

## SUPEX SECURA BAR SPIGOT END

CODE: ASSP



- Steel spigot end to suit Supex Secura Bar

## SUPEX SECURA BAR HANDLE

CODE: ASHA



- Plastic handle for tightening Supex Secura Bar

# CARAVAN AWNING ACCESSORIES

## AWNING ROPE CLIPS

CODE: ARC



- Caravan awning rope clips to fit Dometic (A&E), Carefree and Aussie Traveller awnings
- Stainless steel
- Pack of two

## AWNING ROPE CLIP PK

CODE: ARCPK



- Basic awning set up rope clip pack

Contains:

- Two guy ropes, two awning rope clips, two tent pegs

## 12V AWNING ROPE CRADLE PAIR

CODE: ARCVP



- Awning rope cradles to suit Carefree 12V roll out awning
- Pack of two

## 12V AWNING ROPE CRADLE BOX PACK

CODE: ARCVBP



- Basic set up cradle pack to suit Carefree 12V roll out awning

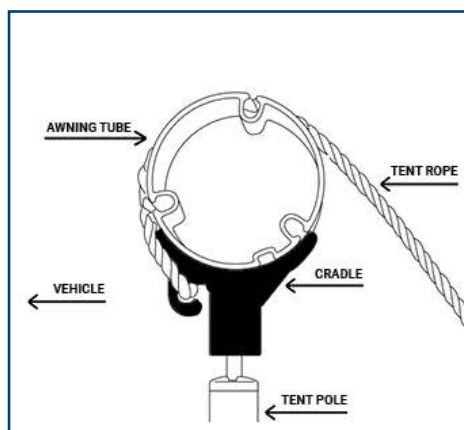
Contains:

- Two cradles, two ground plates, two guy ropes, six tent pegs

# CARAVAN AWNING ACCESSORIES

## 12V AWNING ROPE CRADLE POLE PACK, WHITE

CODE: ARCVPP



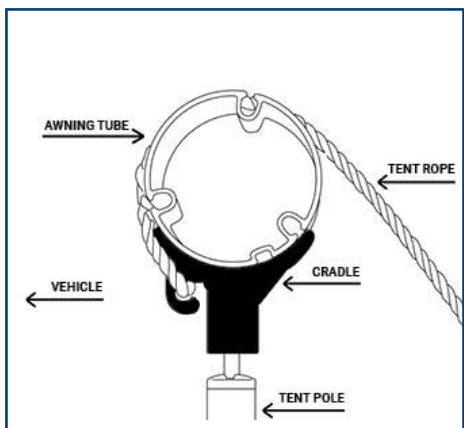
- Complete set cradle pack to suit Carefree 12V roll out awning

Contains:

- Two cradles, two ground plates, two guy ropes, six tent pegs, two white 9ft aluminium poles

## 12V AWNING ROPE CRADLE POLE PACK, BLACK

CODE: ARCVPPB



- Complete set cradle pack to suit Carefree 12V roll out awning

Contains:

- Two cradles, two ground plates, two guy ropes, six tent pegs, two black 9ft aluminium poles



# CARAVAN AWNING ACCESSORIES

## AWNING TENSIONER / DE-FLAPPER

CODE: SRDF1 | Large

CODE: SRDF2 | Small



- Awning tensioner / de-flapper to secure a roll-out awning
- Velcro straps strengthen awning security and reduce wind damage
- Additional strap included for pop top caravans

### SRDF1

- Large: 1 pack, 203mm (w)

### SRDF2

- Small: 2 pack, 50mm (w)

## AWNING BRACKET

CODE: 38AB



- Pole clip for roll out awnings
- Suits 6mm sail track

## CARAVAN AWNING SAFETY STRAPS

CODE: CASS



- Caravan awning safety straps
- Velcro caravan awning safety straps
- Secure awning arms whilst travelling
- Pack of two

## RUBBER LADDER STRAP

CODE: ANLADD



- Makes tying down annexes easy
- Multiple 'steps' in ladder allow for varying tie-down positions
- Perfect for uneven or rough terrain

Dimensions:  
225mm (l) x 22mm (w)

# PRIVACY SCREENS

## LONG WALL PRIVACY SCREEN

- Long wall privacy screen made to suit the Australian outdoor environment
- Shade rating: 95%
- Made from 199GSM fabric
- Exclusive to Supex Products
- Four year warranty
- Includes guy ropes, tent pegs and D-rings



## GREY



CODE: SRPS28 | 2.80m (l) x 1.80m (h) | Suits 10' awning  
CODE: SRPS34 | 3.40m (l) x 1.80m (h) | Suits 12' awning  
CODE: SRPS37 | 3.70m (l) x 1.80m (h) | Suits 13' awning  
CODE: SRPS40 | 4.00m (l) x 1.80m (h) | Suits 14' awning  
CODE: SRPS42 | 4.26m (l) x 1.80m (h) | Suits 15' awning  
CODE: SRPS46 | 4.60m (l) x 1.80m (h) | Suits 16' awning  
CODE: SRPS48 | 4.87m (l) x 1.80m (h) | Suits 17' awning  
CODE: SRPS52 | 5.20m (l) x 1.80m (h) | Suits 18' awning  
CODE: SRPS55 | 5.50m (l) x 1.80m (h) | Suits 19' awning

## BLACK



CODE: SRPS28B | 2.80m (l) x 1.80m (h) | Suits 10' awning  
CODE: SRPS34B | 3.40m (l) x 1.80m (h) | Suits 12' awning  
CODE: SRPS37B | 3.70m (l) x 1.80m (h) | Suits 13' awning  
CODE: SRPS40B | 4.00m (l) x 1.80m (h) | Suits 14' awning  
CODE: SRPS42B | 4.26m (l) x 1.80m (h) | Suits 15' awning  
CODE: SRPS46B | 4.60m (l) x 1.80m (h) | Suits 16' awning  
CODE: SRPS48B | 4.87m (l) x 1.80m (h) | Suits 17' awning  
CODE: SRPS52B | 5.20m (l) x 1.80m (h) | Suits 18' awning  
CODE: SRPS55B | 5.50m (l) x 1.80m (h) | Suits 19' awning

## END WALL PRIVACY SCREEN - TO SUIT CARAVANS

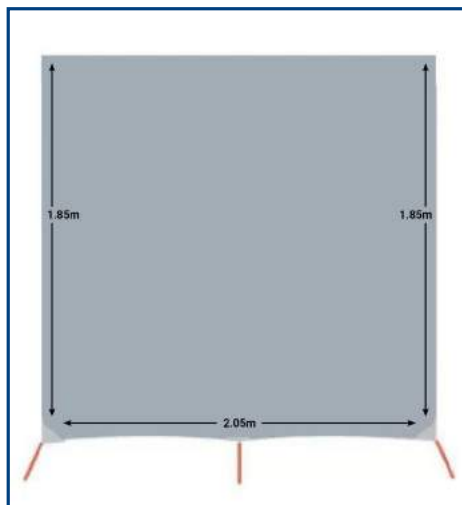


CODE: CAEPS | Grey | 1.90m (w) x 2.35m (high end) x 2.09m (low end)  
CODE: CAEPSB | Black | 1.90m (w) x 2.35m (high end) x 2.09m (low end)

- End wall privacy screen made to suit the Australian outdoor environment
- Shade rating: 95%
- Made from 199GSM fabric
- Exclusive to Supex Products
- Four year warranty
- Includes guy ropes, tent pegs and D-rings

# PRIVACY SCREENS

## POP TOP CARAVAN END WALL



**CODE: PTAEPS** | Grey | 2.05m (w) x 1.85m (h)

**CODE: PTAEPSB** | Black | 2.05m (w) x 1.85m (h)

- Shade rating: 95%
- Manufactured from 199GSM fabric
- Exclusive to Supex Products
- Four year warranty
- Includes guy ropes, tent pegs & D-rings

## BONUS DROP PRIVACY SCREEN - 1.95M DROP



**CODE: SRPSBD37**

3.70m (l) x 1.95m (h) | Suits 13' awning

**CODE: SRPSBD40**

4.00m (l) x 1.95m (h) | Suits 14' awning

**CODE: SRPSBD42**

4.26m (l) x 1.95m (h) | Suits 15' awning

**CODE: SRPSBD46**

4.60m (l) x 1.95m (h) | Suits 16' awning

**CODE: SRPSBD48**

4.87m (l) x 1.95m (h) | Suits 17' awning

**CODE: SRPSBD52**

5.20m (l) x 1.95m (h) | Suits 18' awning

- Bonus drop long wall privacy screen to suit off road caravans

- Shade rating: 95%
- Manufactured from 199GSM fabric
- Exclusive to Supex Products
- Four year warranty
- Includes guy ropes, tent pegs & D-rings

**CODE: SRPSBD55**

5.50m (l) x 1.95m (h) | Suits 19' awning



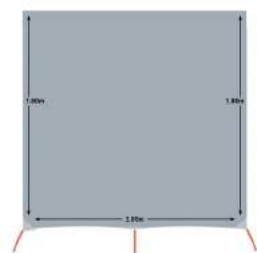
**CODE: CAEPS-BD** | Grey | 2.10m (w) x 2.49m (high end) x 2.09m (low end)

- Bonus drop end wall privacy screen to suit off road caravans
- Shade rating: 95%
- Manufactured from 199GSM fabric
- Exclusive to Supex Products
- Four year warranty
- Includes guy ropes, tent pegs & D-rings

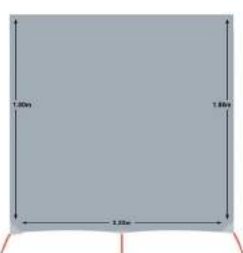


# PRIVACY SCREENS

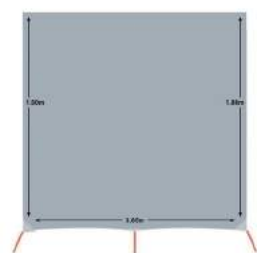
## FIAMMA AWNING PRIVACY SCREEN



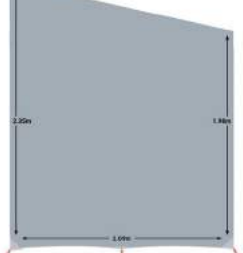
SRPSF28



SRPSF33



SRPSF38



CAEPSF

**CODE: SRPSF28** | 2.85m (l) x 1.80m (h) | Suits 3.00m Fiamma F45 awning

**CODE: SRPSF33** | 3.35m (l) x 1.80m (h) | Suits 3.50m Fiamma F45 awning

**CODE: SRPSF38** | 3.85m (l) x 1.80m (h) | Suits 4.00m Fiamma F45 awning

Privacy screen long wall for Fiamma awning  
- Spline; 4mm

**CODE: CAEPSF** | Spline: 4mm | Suits Fiamma F45 awning

Privacy screen end wall for Fiamma awning  
- Spline; 4mm

## CARAVAN FRIDGE SCREEN



**CODE: SRFS** | 810mm (w) x 1830mm (h)

**CODE: SRFSST** | 810mm (w) x 1830mm (h) | Sail track incl.

- Shades caravan fridge vents to assist performance
- Includes pegs and ropes

## TIE DOWN KIT

**CODE: CAM1**



- Quickly and easily fasten privacy screens
- Provides tension

Includes:

- 5 x bungee cords
- 5 x tent pegs

Tent Peg Dimensions:  
6.3mm (dia.) x 225mm (h)

# ENSUITE

TOILET CHEMICAL SACHETS 45

STIMEX TOILET CHEMICAL LIQUID 46

PORTABLE TOILET & ACCESSORIES 47



# TOILET CHEMICAL SACHETS

## PORTA PAK FRESH SCENT

CODE: WL1



- Odour prevention
- Biodegradable & formaldehyde free
- Pack of 15 sachets

## PORTA PAK LAVENDER BREEZE

CODE: WL2



- Odour prevention
- Biodegradable & formaldehyde free
- Pack of 15 sachets

## PORTA PAK ALPINE FRESH

CODE: WL3



- Removes odours, safe for septic tank
- Biocide & formaldehyde free
- Pack of 15 sachets

## PORTA PAK TROPICAL BREEZE

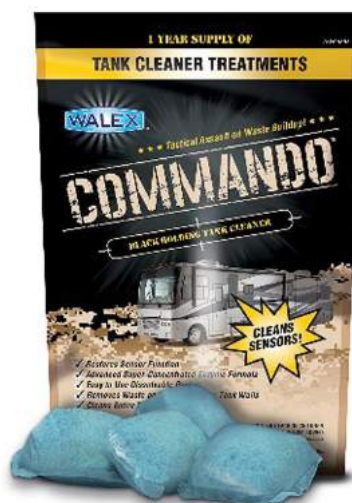
CODE: WL4



- Removes odours, safe for septic tank
- Biocide & formaldehyde free
- Pack of 15 sachets

## PORTA PAK COMMANDO

CODE: WL5



- Lubricates valves & seals
- Septic tank safe, dissolvable packet
- Formaldehyde free
- Pack of 4 sachets

## PORTA PAK ELEMONATE

CODE: WL6



- Cleans sensors inside grey tank
- Dissolves rapidly
- Biodegradable & formaldehyde free
- Pack of 5 sachets



# STIMEX TOILET CHEMICAL LIQUID

## CAMP BLUE



CODE: STCB | Camp Blue, 2.5L

- High concentrate toilet liquid
- For use in the waste tank of all chemical toilets

## CAMP FLUSH



CODE: STCF | Camp Flush, 2.5L

- Pleasant smelling toilet break down liquid
- For use in the flush tank of all chemical toilets
- Environmentally safe & biodegradable

## CAMP GREEN



CODE: STCG | Camp Green, 2.5L

- High concentrate toilet liquid
- For use in the waste tank of all chemical toilets
- Environmentally safe & biodegradable

# PORTABLE TOILET & ACCESSORIES

## PORTABLE TOILET

CODE: PT15



- Pressure control valve and swivel spout for easy emptying
- Auto ventilation
- Single flush nozzle
- Capacity: 15L fresh, 17L waste
- Weight: 3.8kg

Dimensions:

446mm (d) x 380mm (w) x 367mm (h)

## CAMP SOFT

CODE: STICS



- Rapidly dissolving toilet paper
- For all types of portable toilets
- Pack of 4 rolls

## WATER TANK CLEANER

CODE: SWC



- Environmentally friendly concentrate for caravan pipes and water tanks
- Cleans limescale and deposits
- Contains 500mL

## CASSETTE TANK CLEANER

CODE: SCTC



- High concentrate cleaning liquid
- For use in the waste tank of chemical and/or portable toilets
- Contains 500mL



# ELECTRICAL & 12V

<b>ELECTRICAL LEADS</b>	<b>49</b>
<b>ANODE</b>	<b>49</b>
<b>ELECTRICAL ACCESSORIES</b>	<b>49</b>
<b>PLUGS &amp; SOCKETS</b>	<b>49</b>
<b>INTERIOR LED LIGHTING</b>	<b>50</b>
<b>EXTERIOR LED LIGHTING</b>	<b>51</b>
<b>LED LIGHTING</b>	<b>52</b>





## ELECTRICAL LEADS & ANODE

### CARAVAN LEADS

CODE: EL10 | 10m length

CODE: EL15 | 15m length

CODE: EL20 | 20m length



- Heavy duty caravan extension lead
- 15amp plug

### ANODE

CODE: AND1 | Anode, loose

CODE: AND1P | Anode, blister pack



- Magnesium suburban anode
- Designed for suburban RV water heaters
- Dimensions: 21mm dia. x 300mm (l)

## ELECTRICAL ACCESSORIES

### SAFETY POWER BLOCK

CODE: SPB



- 10amp to 15amp plug adaptor
- Includes 1 x 15A socket, 1 x RCBO switch, 10amp plug and 1 x 1.8m lead

### PLUGS & SOCKETS

CODE: EA7FFM | EAP7F



EAP7F



EA7FFM

EA7FFM | 7 PIN FLAT SOCKET

- Circuits engraved into outer casing
- Seven pins rated at 15amps at 12V
- Suitable for 12V and 24V applications

EAP7F | 7 PIN FLAT PLUG

- Circuits engraved into outer casing
- Saddle device to secure wiring
- Seven pins rated at 15amps at 12V
- Suitable for 12V and 24V applications

### HAIR STYLING APPLIANCES

CODE: HDYR | HRST

HRST



HDYR

HDYR

- Convenient, compact hair dryer for travelling
- Hot and cool air options
- DC motor; 12V car use voltage, 50Hz, 192W
- Includes 1.5m PVC cord

HRST

- Convenient hair styler for travelling
- Straighten, curl and style
- Ceramic plate and PTC heater, heats rapidly to max. 200°C
- LED light indicates ready for use
- 12V car use voltage

# INTERIOR LED LIGHTING

## OYSTER LIGHT

CODE: SRLED1



- Interior roof mount light, 12V
- Body colour: white
- Cool white light, 6W

Dimensions: 260mm dia.

## ULTRA SLIM LIGHT

CODE: SRLED5 | SRLED27



- Opal panel light with switch
- Body colour: white

Dimensions:  
SRLED5 - 127mm dia.  
SRLED27 - 216mm dia.

## READING LIGHT

CODE: SRLED2



- LED frosted glass swivel light

Dimensions: 106mm (h)

## READING LIGHT

CODE: SRLED15B | SRLED15C



- 10-15V programmed reading light
- Crystal glass flexible light
- Dual colour - cool white, blue

Dimensions:  
SRLED15B - 160mm (h)  
SRLED15C - 139mm (h)

## BRIGHT BAR LIGHT

CODE: SRLED22 | SRLED23 | SRLED24 | SRLED25



- Milky ultra bright internal LED bar light
- 12V

Dimensions: (as shown top to bottom)  
150mm (l) x 21mm (w) x 12mm (d)  
300mm (l) x 21mm (w) x 12mm (d)  
450mm (l) x 21mm (w) x 12mm (d)  
600mm (l) x 21mm (w) x 12mm (d)

## SWIVEL RAIL LIGHT

CODE: SRLED19 | SRLED20 | SRLED 21



- LED internal swivel rail light
- White polycarbonate shell
- 12V

Dimensions: (as shown top to bottom)  
156mm (l) x 27.5mm (w) x 24.5mm (d)  
298mm (l) x 27.5mm (w) x 24.5mm (d)  
460mm (l) x 27.5mm (w) x 24.5mm (d)

# EXTERIOR LED LIGHTING

## BARGMAN STYLE

CODE: SRLED6



- Polycarbonate ABS plastic housing
- 35 x LED lights
- Chrome base

## NUMBER PLATE LAMP

CODE: SRLEDNPL



Dimensions:  
75mm (l) x 30mm (w) x 35mm (h)

## AWNING LIGHT - PC

CODE: SRLED8W



- White  
Dimensions:  
250mm (l) x 40.5mm (w) x 30mm (h)

## AWNING LIGHT - PC

CODE: SRLED9W



- White  
Dimensions:  
550mm (l) x 40.5mm (w) x 30mm (h)

CODE: SRLED8B



- Black  
Dimensions:  
250mm (l) x 40.5mm (w) x 30mm (h)

CODE: SRLED9B



- Black  
Dimensions:  
550mm (l) x 40.5mm (w) x 30mm (h)



# LED LIGHTING

## CRL360 SERIES: SLIMLINE COMBINATION REAR LAMPS

CODE: RL360DLEDB



- Single, INDICATOR
- 10V - 30V
- Black base

Dimensions:  
400mm (l) x 46mm (d) x 15mm (h)

CODE: RL360DLEDC



- Single, INDICATOR
- 10V - 30V
- Chrome base

Dimensions:  
400mm (l) x 46mm (d) x 15mm (h)

CODE: RL360SLEDB



- Single, STOP/TAIL
- 10 - 30V
- Black base

Dimensions:  
400mm (l) x 46mm (d) x 15mm (h)

CODE: RL360SLEDC



- Single, STOP/TAIL
- 10 - 30V
- Chrome base

Dimensions:  
400mm (l) x 46mm (d) x 15mm (h)

CODE: RL360RLEDB



- Single, REVERSE
- 10 - 30V
- Black base

Dimensions:  
400mm (l) x 46mm (d) x 15mm (h)

CODE: RL360RLEDC



- Single, REVERSE
- 10 - 30V
- Chrome base

Dimensions:  
400mm (l) x 46mm (d) x 15mm (h)

CODE: RL360SDLEDB



- Single, STOP/TAIL/REVERSE
- 10 - 30V
- Black base

Dimensions:  
400mm (l) x 46mm (d) x 15mm (h)

CODE: RL360SDLEDC



- Single, STOP/TAIL/REVERSE
- 10 - 30V
- Chrome base

Dimensions:  
400mm (l) x 46mm (d) x 15mm (h)

CODE: CRL360LEDB



- Combination, STOP/TAIL/INDICATOR
- 10 - 30V
- Black base

Dimensions:  
400mm (l) x 82mm (d) x 15mm (h)

CODE: CRL360LEDC



- Combination, STOP/TAIL/INDICATOR
- 10 - 30V
- Chrome base

Dimensions:  
400mm (l) x 82mm (d) x 15mm (h)

CODE: CRL360RLEDB



- Combination, STOP/TAIL/INDICATOR/REVERSE
- 10 - 30V
- Black base

Dimensions:  
400mm (l) x 82mm (d) x 15mm (h)

CODE: CRL360RLEDC



- Combination, STOP/TAIL/INDICATOR/REVERSE
- 10 - 30V
- Chrome base

Dimensions:  
400mm (l) x 82mm (d) x 15mm (h)

# LED LIGHTING

## CRL260 SERIES: SLIMLINE COMBINATION LAMPS

CODE: RL260DLEDB



- Single, INDICATOR
- 10 - 30V
- Black base

Dimensions:  
259mm (l) x 46mm (d) x 15 mm (h)

CODE: RL260SLEDB



- Single, STOP/TAIL
- 10 - 30V
- Black base

Dimensions:  
259mm (l) x 46mm (d) x 15 mm (h)

CODE: RL260RLEDB



- Single, REVERSE
- 10 - 30V
- Black base

Dimensions:  
259mm (l) x 46mm (d) x 15 mm (h)

CODE: RL260SDLEDB



- Single, STOP/TAIL/INDICATOR
- 10 - 30V
- Black base

Dimensions:  
259mm (l) x 46mm (d) x 15 mm (h)

CODE: CRL260LEDB



- Combination, STOP/TAIL/INDICATOR /REVERSE
- 10 - 30V
- Black base

Dimensions:  
259mm (l) x 82mm (d) x 15 mm (h)

CODE: CRL260LEDB



- Combination, STOP/TAIL/INDICATOR
- 10 - 30V
- Black base

Dimensions:  
259mm (l) x 82mm (d) x 15 mm (h)

# LED LIGHTING

## CRL350 SERIES: COMBINATION REAR LAMPS

CODE: CRL350LEDB



- STOP/TAIL/INDICATOR
- Black base

Dimensions:  
445mm (l) x 155mm (d) x 40 mm (h)

CODE: CRL350LEDC



- STOP/TAIL/INDICATOR
- Chrome base

Dimensions:  
445mm (l) x 155mm (d) x 40 mm (h)

CODE: CRL350CLEDB



- STOP/TAIL/INDICATOR
- Clear lens, black base

Dimensions:  
445mm (l) x 155mm (d) x 40 mm (h)

CODE: CRL350CLEDC



- STOP/TAIL/INDICATOR
- Clear lens, chrome base

Dimensions:  
445mm (l) x 155mm (d) x 40 mm (h)

CODE: CRL350RLEDB



- Combination, STOP/TAIL/INDICATOR/REVERSE
- Black Base

Dimensions:  
445mm (l) x 155mm (d) x 40 mm (h)

CODE: CRL350RLEDC



- Combination, STOP/TAIL/INDICATOR/REVERSE
- Chrome base

Dimensions:  
445mm (l) x 155mm (d) x 40 mm (h)

CODE: CRL350RCLEDB



- STOP/TAIL/INDICATOR/REVERSE
- Clear lens, black base

Dimensions:  
445mm (l) x 155mm (d) x 40 mm (h)

CODE: CRL350RCLEDC



- STOP/TAIL/INDICATOR/REVERSE
- Clear lens, chrome base

Dimensions:  
445mm (l) x 155mm (d) x 40 mm (h)



# LED LIGHTING

## SM8 SERIES: MARKER LAMPS - FRONT, SIDE, REAR

CODE: FM8CLED



- Clear LED front clearance lamp with reflectors

Dimensions:  
90mm (l) x 50mm (d) x 22mm (h)

CODE: RM8RLED



- Red LED rear marker lamp with reflectors

Dimensions:  
90mm (l) x 50mm (d) x 22mm (h)

CODE: SM8ALED



- Amber LED side marker lamp with reflectors

Dimensions:  
90mm (l) x 50mm (d) x 22mm (h)

## SM13 & SM62 SERIES: MARKER LAMPS

CODE: SM13ALED



- Amber 'retrofit' LED marker  
- Includes 0.5m cable

Dimensions:  
120mm (l) x 64mm (d) x 32mm (h)

CODE: SM13RALED



- Red/amber 'retrofit' LED side marker  
- Includes 0.5m cable

Dimensions:  
120mm (l) x 64mm (d) x 32mm (h)

CODE: FM62CLED



- Clear LED front clearance marker  
- 9 - 33V  
- Includes 0.5m cable

Dimensions:  
57mm (l) x 35mm (d) x 21mm (h)

CODE: SM62RALED



- Red/Amber side marker  
- 9 - 33V  
- Includes 0.5m cable

Dimensions:  
57mm (l) x 35mm (d) x 21mm (h)

CODE: RM62RLED



- Red rear marker  
- 9 - 33V  
- Includes 0.5m cable

Dimensions:  
57mm (l) x 35mm (d) x 21mm (h)

CODE: SM62ALED



- Amber side marker  
- 9 - 33V  
- Includes 0.5m cable

Dimensions:  
57mm (l) x 35mm (d) x 21mm (h)



DEVILS MARBLES, KATA TJUTA, NT





# CAMP & OUT DOORS

---

TENT POLES &  
SPREADER BARS  
\_\_\_\_\_ 58

ROPES & PEGS  
\_\_\_\_\_ 70

MAINTENANCE &  
REPAIR  
\_\_\_\_\_ 78

BEDDING  
\_\_\_\_\_ 84

FURNITURE  
\_\_\_\_\_ 88

COOKWARE  
\_\_\_\_\_ 94

BEACH & SHELTERS  
\_\_\_\_\_ 104

CAMPSITE  
ACCESSORIES  
\_\_\_\_\_ 114





# TENT POLES & SPREADER BARS

TENT POLES	59
TWO PIECE POLE	61
SPREADER BARS	62
ROOF RAILS	63
ALUMINIUM POLES	64
ALUMINIUM SPREADER BARS	65
TENT POLE ACCESSORIES	66
TORNADO TARPS	69



# TENT POLES

## TENT POLE - T NUT - IMPORTED



CODE: 564Ci | 19-22mm dia. x 0.9WT – max. 183cm (6') | Collapsed length: ~113cm

CODE: 564Di | 19-22mm dia. x 0.9WT – max. 228cm (7'6") | Collapsed length: ~129cm

CODE: 564Ei | 19-22mm dia. x 0.9WT – max. 274cm (9') | Collapsed length: ~149cm

## EXTENSION POLE - T NUT - HEAVY DUTY CAP



CODE: 564C | 19-22mm dia. x 0.9WT – max. 183cm (6') | Collapsed length: ~110cm

CODE: 564D | 19-22mm dia. x 0.9WT – max. 228cm (7'6") | Collapsed length: ~122cm

CODE: 564B | 19-22mm dia. x 0.9WT – max. 243cm (8') | Collapsed length: ~133cm

CODE: 564E | 19-22mm dia. x 0.9WT – max. 274cm (9') | Collapsed length: ~146cm

CODE: 564F | 19-22mm dia. x 0.9WT – max. 305cm (10') | Collapsed length: ~169cm



## EXTENSION SUPPORT POLE - T NUT - CLIP 1 END



CODE: 564DC | 19-22mm dia. x 0.9WT - max. 228cm (7'6") - clip end | Collapsed length: ~125cm

CODE: 564BC | 19-22mm dia. x 0.9WT - max. 243cm (8') - clip end | Collapsed length: ~136cm

CODE: 564EC | 19-22mm dia. x 0.9WT - max. 274cm (9') - clip end | Collapsed length: ~149cm

CODE: 564FC | 19-22mm dia. x 0.9WT - max. 305cm (10') - clip end | Collapsed length: ~166cm





# TENT POLES

## EXTENSION SUPPORT POLE - T NUT - SQUARE C-CLIP



CODE: 564DSQC | 19-22mm dia. x 0.9WT – max. 228cm (7'6") - square clip end | Collapsed length: ~125cm

CODE: 564BSQC | 19-22mm dia. x 0.9WT – max. 243cm (8') - square clip end | Collapsed length: ~136cm

CODE: 564ESQC | 19-22mm dia. x 0.9WT – max. 274cm (9') - square clip end | Collapsed length: ~149cm

CODE: 564FSQC | 19-22mm dia. x 0.9WT – max. 305cm (10') - square clip end | Collapsed length: ~166cm



## THREE PIECE EXTENSION POLE



CODE: 564H | 19-22-25mm dia. x 0.9WT – max. 243cm (8') | Collapsed length: ~96cm

CODE: 564I | 19-22-25mm dia. x 0.9WT – max. 305cm (10') | Collapsed length: ~116cm

CODE: 564G | 19-22-25mm dia. x 0.9WT – max. 366cm (12') | Collapsed length: ~138cm



## EXTENSION POLE - T NUT - THREADED SPIGOT



CODE: 564CT | 19-22mm dia. x 0.9WT - max. 183cm (6') - threaded spigot | Collapsed length: ~110cm

CODE: 564DT | 19-22mm dia. x 0.9WT - max. 228cm (7'6") - threaded spigot | Collapsed length: ~126cm

CODE: 564BT | 19-22mm dia. x 0.9WT - max. 243cm (8') - threaded spigot | Collapsed length: ~133cm

CODE: 564ET | 19-22mm dia. x 0.9WT - max. 274cm (9') - threaded spigot | Collapsed length: ~146cm

CODE: 564FT | 19-22mm dia. x 0.9WT - max. 305cm (10') - threaded spigot | Collapsed length: ~169cm



## SWAG POLE



CODE: 564A | 16-19mm dia. x 0.9WT – max. 122cm (4') | Collapsed length: ~74cm





# TENT POLES

## EXTENSION POLE - T NUT - HEAVY DUTY



CODE: 464D | 19-22mm dia. x 1.2WT – max. 228cm (7'6") | Collapsed length: ~126cm

CODE: 464E | 19-22mm dia. x 1.2WT – max. 274cm (9') | Collapsed length: ~146cm

CODE: 364D | 22-25mm dia. x 1.2WT – max. 228cm (7'6") | Collapsed length: ~126cm

CODE: 364E | 22-25mm dia. x 1.2WT – max. 274cm (9') | Collapsed length: ~146cm



## EXTENSION POLE - T NUT - HEAVY DUTY SOLID SPIGOT



CODE: 464DMS | 19-22mm dia. x 1.2WT – max. 228cm (7'6") - solid spigot | Collapsed length: ~127cm

CODE: 464EMS | 19-22mm dia. x 1.2WT – max. 274cm (9') - solid spigot | Collapsed length: ~147cm

CODE: 364DMS | 22-25mm dia. x 1.2WT – max. 228cm (7'6") - solid spigot | Collapsed length: ~127cm

CODE: 364EMS | 22-25mm dia. x 1.2WT – max. 274cm (9') - solid spigot | Collapsed length: ~147cm



## EXTENSION POLE - WELDED SPIGOT



CODE: 564CWS | 19-22mm dia. x 0.9WT – max. 183cm (6') - solid welded metal spigot | Collapsed length: ~113cm

CODE: 564DWS | 19-22mm dia. x 0.9WT – max. 228cm (7'6") - solid welded metal spigot | Collapsed length: ~129cm

CODE: 564BWS | 19-22mm dia. x 0.9WT – max. 243cm (8') - solid welded metal spigot | Collapsed length: ~136cm

CODE: 564EWS | 19-22mm dia. x 0.9WT – max. 274cm (9') - solid welded metal spigot | Collapsed length: ~149cm

CODE: 564FWS | 19-22mm dia. x 0.9WT – max. 305cm (10') - solid welded metal spigot | Collapsed length: ~172cm



## TWO PIECE MARQUEE POLE - STEEL



CODE: 264U | 22mm dia. x 0.9WT – max. 183cm (6')

CODE: 264V | 22mm dia. x 0.9WT – max. 214cm (7')

CODE: 264W | 22mm dia. x 0.9WT – max. 243cm (8')



# SPREADER BARS

## SPREADER BARS - T NUT - EYE BOTH ENDS



CODE: 564K | 19-22mm dia. x 0.9WT – max. 122cm (4') - 2 piece | Collapsed length: ~73cm  
CODE: 564L | 19-22mm dia. x 0.9WT – max. 152cm (5') - 2 piece | Collapsed length: ~88cm  
CODE: 564M | 19-22mm dia. x 0.9WT – max. 183cm (6') - 2 piece | Collapsed length: ~103cm  
CODE: 564N | 19-22mm dia. x 0.9WT – max. 213cm (7') - 2 piece | Collapsed length: ~126cm  
CODE: 564O | 19-22mm dia. x 0.9WT – max. 243cm (8') - 2 piece | Collapsed length: ~137cm  
CODE: 564P | 19-22mm dia. x 0.9WT – max. 274cm (9') - 2 piece | Collapsed length: ~150cm  
CODE: 564Q | 19-22mm dia. x 0.9WT – max. 305cm (10') - 2 piece | Collapsed length: ~167cm  
CODE: 564S | 22-25mm dia. x 1.2WT – max. 365cm (12') - 3 piece | Collapsed length: ~130cm  
CODE: 564X | 22-25mm dia. x 1.2WT – max. 427cm (14') - 3 piece | Collapsed length: ~152cm  
CODE: 564Y | 22-25mm dia. x 1.2WT – max. 488cm (16') - 4 piece | Collapsed length: ~133cm  
CODE: 564Z | 22-25mm dia. x 1.2WT – max. 548cm (18') - 4 piece | Collapsed length: ~148cm



## SPREADER BARS - T NUT - CLIP 1 END



CODE: 564KC | 19-22mm dia. x 0.9WT – max. 122cm (4') - 2 piece, clip end | Collapsed length: ~76cm  
CODE: 564LC | 19-22mm dia. x 0.9WT – max. 152cm (5') - 2 piece, clip end | Collapsed length: ~91cm  
CODE: 564MC | 19-22mm dia. x 0.9WT – max. 183cm (6') - 2 piece, clip end | Collapsed length: ~106cm  
CODE: 564NC | 19-22mm dia. x 0.9WT – max. 213cm (7') - 2 piece, clip end | Collapsed length: ~129cm  
CODE: 564OC | 19-22mm dia. x 0.9WT – max. 243cm (8') - 2 piece, clip end | Collapsed length: ~140cm  
CODE: 564PC | 19-22mm dia. x 0.9WT – max. 274cm (9') - 2 piece, clip end | Collapsed length: ~153cm



## SPREADER BARS - T NUT - CLIP 2 ENDS



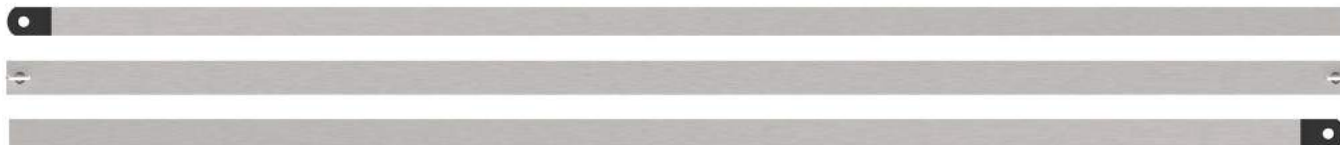
CODE: 564KC2 | 19-22mm dia. x 0.9WT – max. 122cm (4') - 2 piece, clip 2 ends | Collapsed length: ~74cm  
CODE: 564LC2 | 19-22mm dia. x 0.9WT – max. 152cm (5') - 2 piece, clip 2 ends | Collapsed length: ~89cm  
CODE: 564MC2 | 19-22mm dia. x 0.9WT – max. 183cm (6') - 2 piece, clip 2 ends | Collapsed length: ~104cm  
CODE: 564NC2 | 19-22mm dia. x 0.9WT – max. 213cm (7') - 2 piece, clip 2 ends | Collapsed length: ~127cm  
CODE: 564OC2 | 19-22mm dia. x 0.9WT – max. 243cm (8') - 2 piece, clip 2 ends | Collapsed length: ~138cm  
CODE: 564PC2 | 19-22mm dia. x 0.9WT – max. 274cm (9') - 2 piece, clip 2 ends | Collapsed length: ~151cm



## SPREADER BARS

## ROOF RAILS

### HEAVY DUTY SQUARE SPREADER BARS



CODE: SR12 | 22-25mm – max. 365cm (12') - 3 piece | Collapsed length: ~133cm

CODE: SR15 | 22-25mm – max. 457cm (15') - 3 piece | Collapsed length: ~163cm

CODE: SR18 | 22-25mm – max. 548cm (18') - 4 piece | Collapsed length: ~155cm

CODE: SR20 | 22-25mm – max. 608cm (20') - 4 piece | Collapsed length: ~163cm

CODE: SR24 | 22-25mm – max. 730cm (24') - 5 piece | Collapsed length: ~163cm

CODE: SR30 | 22-25mm – max. 912cm (30') - 6 piece | Collapsed length: ~163cm

CODE: SR36 | 22-25mm – max. 1096cm (36') - 8 piece | Collapsed length: ~155cm



### ROOF RAILS - T NUT (INCLUDING BRACKET)



CODE: 564T | 19-22mm dia. x 0.9WT – max. 243cm (8') - eye end | Collapsed length: ~137cm

CODE: 564V | 19-22mm dia. x 0.9WT – max. 274cm (9') - eye end | Collapsed length: ~150cm

CODE: 564W | 19-22mm dia. x 0.9WT – max. 305cm (10') - eye end | Collapsed length: ~167cm



### ROOF RAILS - T NUT (INCLUDING BRACKET) - CLIP END



CODE: 564TC | 19-22mm dia. x 0.9WT – max. 243cm (8') - clip end | Collapsed length: ~140cm

CODE: 564VC | 19-22mm dia. x 0.9WT – max. 274cm (9') - clip end | Collapsed length: ~153cm

CODE: 564WC | 19-22mm dia. x 0.9WT – max. 305cm (10') - clip end | Collapsed length: ~170cm



### ROOF RAILS - T NUT (INCLUDING BRACKET) - SPIGOT END



CODE: 564TS | 19-22mm dia. x 0.9WT – max. 243cm (8') - spigot end | Collapsed length: ~143cm

CODE: 564VS | 19-22mm dia. x 0.9WT – max. 274cm (9') - spigot end | Collapsed length: ~156cm

CODE: 564WS | 19-22mm dia. x 0.9WT – max. 305cm (10') - spigot end | Collapsed length: ~173cm





# ALUMINIUM POLES

## ALUMINIUM TENT POLES - TWIST LOCK



CODE: 264S | 22-25mm dia. x 1.2WT – max. 228cm (7'6") - mill finish | Collapsed length: ~131cm

CODE: 264SW | 22-25mm dia. x 1.2WT – max. 228cm (7'6") - white finish | Collapsed length: ~131cm

CODE: 264SB | 22-25mm dia. x 1.2WT – max. 228cm (7'6") - black finish | Collapsed length: ~131cm

CODE: 264T | 22-25mm dia. x 1.2WT – max. 274cm (9') - mill finish | Collapsed length: ~155cm

CODE: 264TW | 22-25mm dia. x 1.2WT – max. 274cm (9') - white finish | Collapsed length: ~155cm

CODE: 264TB | 22-25mm dia. x 1.2WT – max. 274cm (9') - black finish | Collapsed length: ~155cm

CODE: 264TG | 22-25mm dia. x 1.2WT – max. 274cm (9') - grey finish | Collapsed length: ~150cm



## ALUMINIUM TENT POLES - TWIST LOCK - CLIP END



CODE: 264SC | 22-25mm dia. x 1.2WT – max. 228cm (7'6") - clip end, mill finish | Collapsed length: ~129cm

CODE: 264SWC | 22-25mm dia. x 1.2WT – max. 228cm (7'6") - clip end, white finish | Collapsed length: ~129cm

CODE: 264SBC | 22-25mm dia. x 1.2WT – max. 228cm (7'6") - clip end, black finish | Collapsed length: ~129cm

CODE: 264TC | 22-25mm dia. x 1.2WT – max. 274cm (9') - clip end, mill finish | Collapsed length: ~153cm

CODE: 264TWC | 22-25mm dia. x 1.2WT – max. 274cm (9') - clip end, white finish | Collapsed length: ~153cm

CODE: 264TBC | 22-25mm dia. x 1.2WT – max. 274cm (9') - clip end, black finish | Collapsed length: ~153cm

CODE: 264TGC | 22-25mm dia. x 1.2WT – max. 274cm (9') - clip end, grey finish | Collapsed length: ~153cm



## ALUMINIUM TENT POLES - CLAMP ADJUSTMENT



CODE: 264SCL | 22-25mm dia. x 1.2WT – max. 228cm (7'6") - mill finish | Collapsed length: ~129cm

CODE: 264SWCL | 22-25mm dia. x 1.2WT – max. 228cm (7'6") - white finish | Collapsed length: ~129cm

CODE: 264SBCL | 22-25mm dia. x 1.2WT – max. 228cm (7'6") - black finish | Collapsed length: ~129cm

CODE: 264TCL | 22-25mm dia. x 1.2WT – max. 274cm (9') - mill finish | Collapsed length: ~153cm

CODE: 264TWCL | 22-25mm dia. x 1.2WT – max. 274cm (9') - white finish | Collapsed length: ~153cm

CODE: 264TBCL | 22-25mm dia. x 1.2WT – max. 274cm (9') - black finish | Collapsed length: ~153cm

CODE: 264TGCL | 22-25mm dia. x 1.2WT – max. 274cm (9') - grey finish | Collapsed length: ~153cm



# ALUMINIUM SPREADER BARS

## ALUMINIUM SPREADER BARS - CLAMP ADJUSTMENT



CODE: 264N | 22-25mm spreader bar x 1.2WT – max. 228cm (7'6") - mill finish | Collapsed length: ~130cm

CODE: 264NW | 22-25mm spreader bar x 1.2WT – max. 228cm (7'6") - white finish | Collapsed length: ~130cm

CODE: 264NB | 22-25mm spreader bar x 1.2WT – max. 228cm (7'6") - black finish | Collapsed length: ~130cm

CODE: 264P | 22-25mm spreader bar x 1.2WT – max. 274cm (9') - mill finish | Collapsed length: ~154cm

CODE: 264PB | 22-25mm spreader bar x 1.2WT – max. 274cm (9') - black finish | Collapsed length: ~154cm

CODE: 264PG | 22-25mm spreader bar x 1.2WT – max. 274cm (9') - grey finish | Collapsed length: ~154cm

CODE: 264PW | 22-25mm spreader bar x 1.2WT – max. 274cm (9') - white finish | Collapsed length: ~154cm

## ALUMINIUM SPREADER BAR - CLAMP ADJUSTMENT - CLIP 2 ENDS



CODE: 264NC2 | 22-25mm spreader bar x 1.2WT – max. 228cm (7'6") - mill finish

CODE: 264NWC2 | 22-25mm spreader bar x 1.2WT – max. 228cm (7'6") - white finish

CODE: 264NBC2 | 22-25mm spreader bar x 1.2WT – max. 228cm (7'6") - black finish

CODE: 264PC2 | 22-25mm spreader bar x 1.2WT – max. 274cm (9') - mill finish

CODE: 264PWC2 | 22-25mm spreader bar x 1.2WT – max. 274cm (9') - white finish

CODE: 264PBC2 | 22-25mm spreader bar x 1.2WT – max. 274cm (9') - black finish

## ALUMINIUM SPREADER BAR BEND SPIGOT - TO MATCH JAYCO VANS



CODE: 264PJS | 22-25mm spreader bar x 1.2WT – max. 274cm (9') - mill finish | Collapsed length: ~156cm

## POP TOP SUPPORT BAR - JAYCO



CODE: PTSJ

- Specifically designed to suit Jayco pop top vans
- Rubber caps either end

Dimensions:  
22mm (dia.) x 1200mm (l)

# TENT POLE ACCESSORIES

## SPIGOT

CODE: 38U | Fits 19mm tube O/D  
CODE: 38W | Fits 22mm tube O/D  
CODE: 38X | Fits 25mm tube O/D



## THREADED SPIGOT

CODE: 38UT | Fits 19mm tube O/D  
CODE: 38WT | Fits 22mm tube O/D  
CODE: 38XT | Fits 25mm tube O/D



## LONG SPIGOTS

CODE: 38UL  
Fits 19mm tube O/D, 100mm (l)  
CODE: 38WL  
Fits 22mm tube O/D, 100mm (l)  
CODE: 38XL  
Fits 25mm tube O/D, 100mm (l)



## SOLID ALUMINIUM SPIGOT

CODE: 38YS | Fits 22mm tube O/D  
CODE: 38Y | Fits 25mm tube O/D



## 6MM PIN SPIGOT

CODE: 38WS | Fits 22mm tube O/D



## BENT SPIGOT

CODE: 38UB | Fits 19mm tube O/D  
CODE: 38WB | Fits 22mm tube O/D  
CODE: 38XB | Fits 25mm tube O/D



## HOOK BENT SPIGOT

CODE: HBS | Fits 22mm tube O/D  
CODE: HBS2 | Fits 25mm tube O/D



## JAYCO BENT SPIGOT

CODE: JBS | Fits 22mm tube O/D suits Jayco roof rail bracket



## S BEND SPIGOT

CODE: SBS1 | Fits 22mm tube O/D  
CODE: SBS2 | Fits 25mm tube O/D





# TENT POLE ACCESSORIES

## BOW KNUCKLE

CODE: BK19 | Fits 19mm tube O/D  
CODE: BK22 | Fits 22mm tube O/D  
CODE: BK25 | Fits 25mm tube O/D



## INTERNAL POLE CAP

CODE: 66Q | 16mm O/D  
CODE: 66R | 19mm O/D  
CODE: 66S | 22mm O/D  
CODE: 66T | 25mm O/D



## EXTERNAL POLE CAP

CODE: 66K | 16mm O/D  
CODE: 66L | 19mm O/D  
CODE: 66M | 22mm O/D  
CODE: 66P | 25mm O/D



## SQUARE 'C' CLIP SUPPORT CLIP

CODE: 38PSQ | For square ridge poles



## PLASTIC SNAP CLIP

CODE: 38PS | Fits/snaps 19mm tube O/D  
CODE: 38PM | Fits/snaps 19/22mm tube O/D  
CODE: 38PL | Fits/snaps 22mm tube O/D  
CODE: 38PO | Fits/snaps 22/25mm tube O/D  
CODE: 38PX | Fits/snaps 25mm tube O/D



## JAYCO MOUNTING BRACKET SET

CODE: 38MSJ | Replacement roof rail bracket for Jayco vans



## BIRD BEAK & PLATE

CODE: 38E | Fits 22mm/25mm tube O/D



## BOW MOUNT

CODE: 39T



## WINDOW BRACKET

CODE: 38N



# TENT POLE ACCESSORIES

## SPLICE CLIP

CODE: 39K | Fits 6mm rope



## SPIGOT DOME

CODE: 38V



## SPIGOT DOME & SPRING

CODE: 38VSP



## POLE CLAMP

CODE: PCL25 | Suits 25mm O/D tube



## PLASTIC POLE GROUND PLATE

CODE: 38P



## T NUT & THUMBSCREW

CODE: 38Z | Suits all steel poles



## QUICK ACTION CLAMP

CODE: PCALC | Fits 25mm O/D tube  
CODE: PCALC22 | Fits 22mm O/D tube



## SPRING BUTTON CLIP

CODE: 38R



## SQUARE BOW END

CODE: SBE22 | Fits 22mm square tube O/D  
CODE: SBE25 | Fits 25mm square tube O/D



## CAMLOK

CODE: CLK | Internal locking mechanism for aluminium pole



## BOW ENDS

CODE: BE1 | Fits 19mm tube O/D  
CODE: BE2 | Fits 22mm tube O/D  
CODE: BE3 | Fits 25mm tube O/D



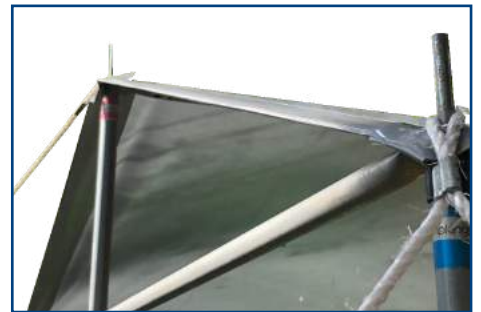
## ROOF RAIL BRACKETS

CODE: 38MS | Stainless steel  
CODE: 38MSW | White powder coated  
CODE: 38MSB | Black powder coated



# TORNADO TARPS

- Strong & long lasting
- Swiss patented technology
- Guaranteed lifetime waterproof
- Made from 3 layer cross-laminated XF film
- 120GSM fabric
- Tear resistant and ripstop material
- No peeling or cracking
- Puncture resistant
- Extra heavy duty
- High tensile strength
- 100% recyclable
- Engineered stretch and elongation for pulling in all directions
- 3X superior to traditional woven tarps
- Ultrasonic reinforced aluminium welded eyelets
- UV resistant for 3 years



**3X  
superior  
to woven  
tarps**

**3 year  
Quality  
Guarantee**

**3 layers of  
XF film**

## TORNADO TARPS

- All measurements are finished sizes, so you can use every centimetre you pay for

CODE: 12AXSUP12X12 | 12ft x 12ft | 3600mm x 3600mm

CODE: 12AXSUP12X14 | 12ft x 14ft | 3600mm x 4300mm

CODE: 12AXSUP12X16 | 12ft x 16ft | 3600mm x 4800mm

CODE: 12AXSUP16X20 | 16ft x 20ft | 4800mm x 6100mm

CODE: 12AXSUP16X24 | 16ft x 24ft | 4800mm x 7300mm

CODE: 12AXSUP20X26 | 20ft x 26ft | 6100mm x 7900mm

CODE: 12AXSUP20X30 | 20ft x 30ft | 6100mm x 9100mm

CODE: 12AXSUP22X30 | 22ft x 30ft | 6700mm x 9100mm

CODE: 12AXSUP24X30 | 24ft x 30ft | 7300mm x 9100mm





# ROPES & PEGS

GUY ROPES	71
TENT PEGS - BULK BUY	72
TENT PEGS - HANG SELL	73
TENT PEG ACCESSORIES	73
PEGGY PEG	74
ROPE & ACCESSORIES	76
SHOCK CORD & ACCESSORIES	77

# GUY ROPES

## PLASTIC SLIDES

CODE: 38L | Single



- Guy rope kit, 4mm rope with plastic slide

CODE: 38Q | Single

CODE: 38QQ | Double



- Guy rope kit, 6mm rope with plastic slide

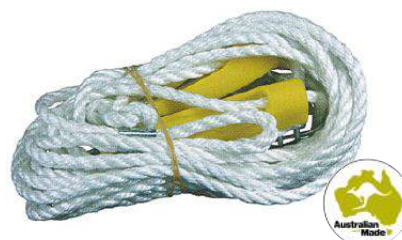
## POLYMER SLIDES

CODE: 32B | Single



- Guy rope kit, 6mm rope with metal spring and polymer slide

CODE: 32BB | Double



- Guy rope kit, 6mm rope with metal spring and polymer slide

## TIMBER SLIDES

CODE: 38J | Single

CODE: 38JJ | Double



- Guy rope kit, 6mm rope with heavy duty wood slide

CODE: 38K | Single

CODE: 38KK | Double



- Guy rope kit, 6mm rope with metal spring and heavy duty wood slide

## METAL SLIDES

CODE: 38A | Single

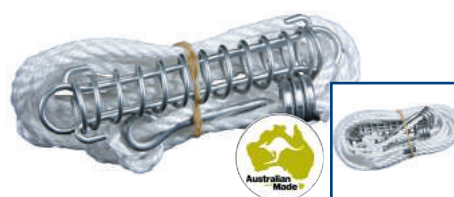
CODE: 38AA | Double



- Guy rope kit, 6mm rope with metal slide

CODE: 38S | Single

CODE: 38SS | Double



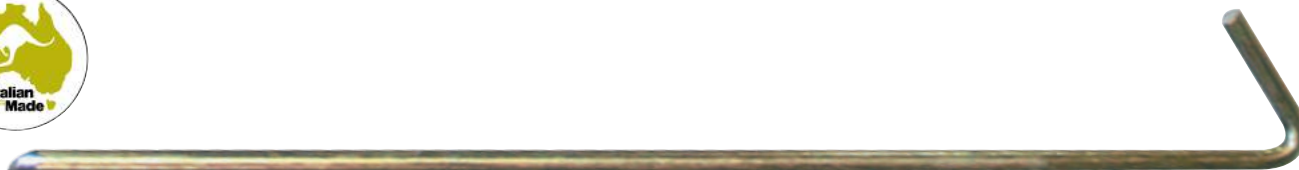
- Guy rope kit, 6mm rope with metal slide & spring



# TENT PEGS - BULK BUY

## STEEL TENT PEGS - AUSTRALIAN MADE

- Manufactured from Australian hard galvanised steel
- Approx. 50% harder than mild steel



**CODE: 39A** | Bulk pack of 400 |  
4mm (dia.) x 175mm (l) ( $\frac{3}{16}$ " x 7")

**CODE: 39B** | Bulk pack of 100 |  
6.3mm (dia.) x 225mm (l) ( $\frac{1}{4}$ " x 9")

**CODE: 39C** | Bulk pack of 100 |  
8mm (dia.) x 300mm (l) ( $\frac{5}{16}$ " x 12")

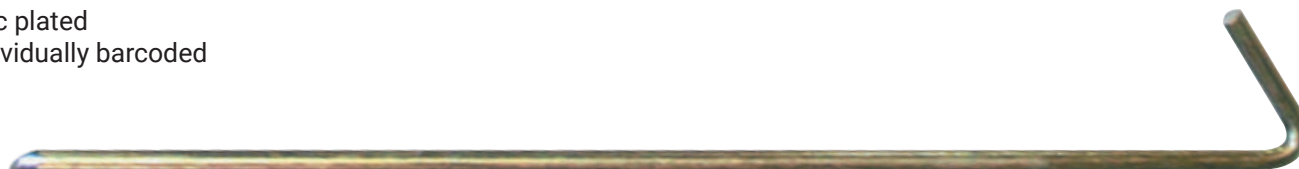
**CODE: 39AL** | Bulk pack of 100 |  
6.3mm (dia.) x 175mm (l) ( $\frac{1}{4}$ " x 7")

**CODE: 39J** | Bulk pack of 100 |  
8mm (dia.) x 225mm (l) ( $\frac{5}{16}$ " x 9")

**CODE: 39D** | Bulk pack of 50 |  
9.5mm (dia.) x 350mm (l) ( $\frac{3}{8}$ " x 14")

## STEEL TENT PEGS - IMPORTED

- Zinc plated
- Individually barcoded



**CODE: 39Ai** | Bulk pack of 100 |  
4mm (dia.) x 175mm (l) ( $\frac{3}{16}$ " x 7")

**CODE: 39Ji** | Bulk pack of 100 |  
8mm (dia.) x 225mm (l) ( $\frac{5}{16}$ " x 9")

**CODE: 39Di** | Bulk pack of 100 |  
9.5mm (dia.) x 350mm (l) ( $\frac{3}{8}$ " x 14")

**CODE: 39ALi** | Bulk pack of 100 |  
6.3mm (dia.) x 175mm (l) ( $\frac{1}{4}$ " x 7")

**CODE: 39Ci** | Bulk pack of 100 |  
8mm (dia.) x 300mm (l) ( $\frac{5}{16}$ " x 12")

**CODE: 39H** | Bulk pack of 50 |  
12mm (dia.) x 450mm (l) ( $\frac{1}{2}$ " x 18")

**CODE: 39Bi** | Bulk pack of 100 |  
6.3mm (dia.) x 225mm (l) ( $\frac{1}{4}$ " x 9")

## PLASTIC SAND PEGS

- Manufactured from Australian polypropylene



**CODE: 39E**  
Bulk pack of 100 | 220mm (l) (9")

**CODE: 39F**  
Bulk pack of 100 | 300mm (l) (12")

**CODE: 39G**  
Bulk pack of 50 | 500mm (l) (19")



## TENT PEGS - HANG SELL

### STEEL TENT PEGS - IMPORTED, HANG SELL



CODE: 39AP | Hang sell bag of 10 |  
4mm dia. x 175mm (l) ( $\frac{3}{16}$ " x 7")

CODE: 39ALP | Hang sell bag of 10 |  
6.3mm dia. x 175mm (l) ( $\frac{1}{4}$ " x 7")

CODE: 39BP | Hang sell bag of 10 |  
6.3mm dia. x 225mm (l) ( $\frac{1}{4}$ " x 9")

CODE: 39BLP | Hang sell bag of 10 |  
6.3mm dia. x 300mm (l) ( $\frac{1}{4}$ " x 12")

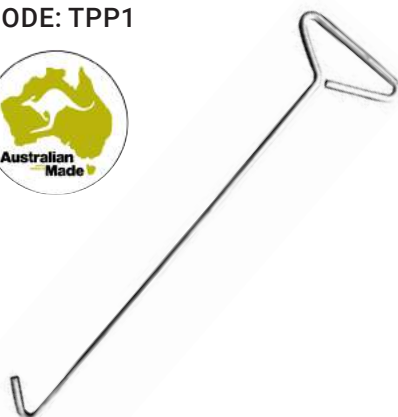
CODE: 39JP | Hang sell bag of 6 |  
8mm dia. x 225mm (l) ( $\frac{5}{16}$ " x 9")

CODE: 39CP | Hang sell bag of 6 |  
8mm dia. x 300mm (l) ( $\frac{5}{16}$ " x 12")

CODE: 39DP | Hang sell bag of 4 |  
9.5mm dia. x 350mm (l) ( $\frac{3}{8}$ " x 14")

### TENT PEG PULLER

CODE: TPP1



- One piece design for easy removal of  
tent pegs

Dimensions: 800mm (l)

### TENT PEG BAG

CODE: TPB



- Canvas bag to suit tent pegs or guy  
ropes

Dimensions:  
450mm (l) x 100mm (w) x 100mm (h)

## TENT PEG ACCESSORIES

### PLASTIC TENT PEGS - HANG SELL



CODE: 39EP | Hang sell bag of 6 |  
220mm (l) (9")

CODE: 39FP | Hang sell bag of 4 |  
30mm (l) (12")

CODE: 39GP | Hang sell bag of 3 |  
500mm (l) (19")

### TENT POLE BAG

CODE: LPB

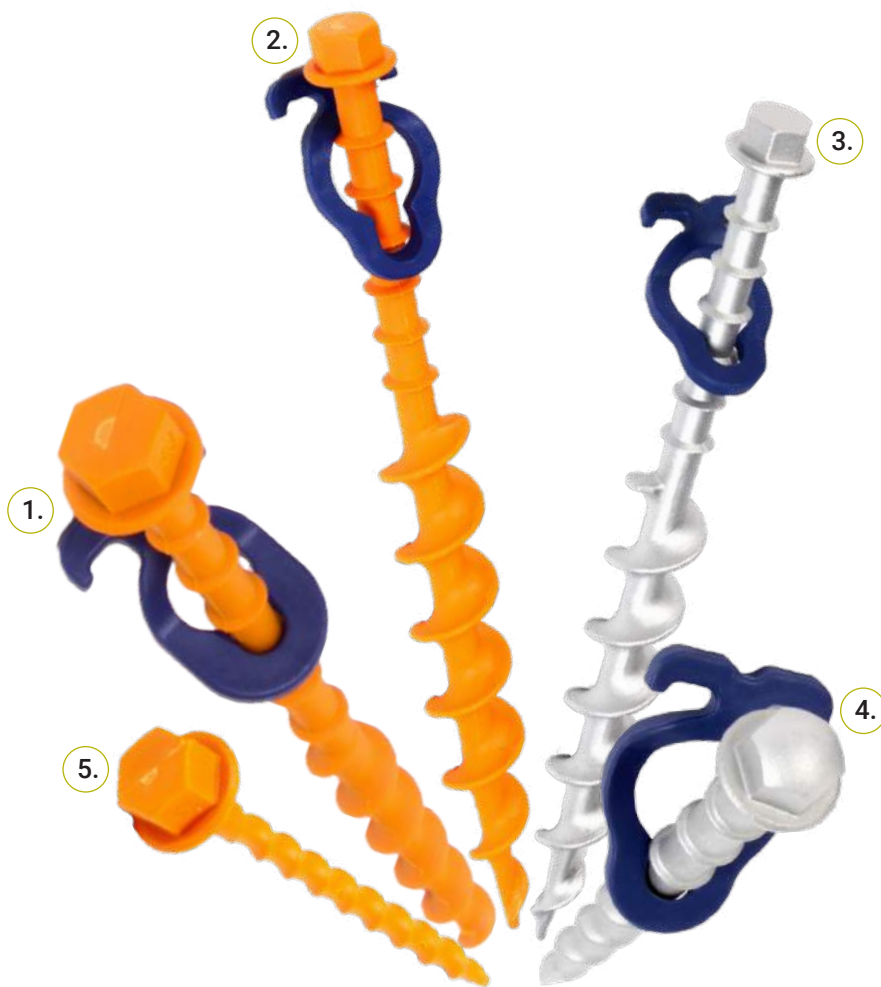


- Canvas bag to suit tent poles

Dimensions:  
1.65m (l) x 80mm (w) x 160mm (h)

# PEGGY PEG

## PEGGY PEG TENT PEGS



### 1. CODE: SUPP02

- For tarps, tents, awnings etc.
- Pack of 12
- Dimensions: 200mm (l)

### 2. CODE: SUPP12

- Great for sandy areas and soft ground
- Pack of 2
- Dimensions: 310mm (l)

### 3. CODE: SUPP13

- Best for gazebos, awnings, marquees
- Pack of 2
- Dimensions: 310mm (l)

### 4. CODE: SUHP61

- Great for stony, rocky ground
- Pack of 4
- Dimensions: 150mm (l)

### 5. CODE: SUPP05

- Use for ground matting and sunshades
- Pack of 12
- Dimensions: 120mm (l)

## HARDCORE COMBO TOOL

CODE: SUHP68



- Hardcore aluminium version of the drill adaptor and hand driver
- For drilling pegs where the torque is likely to be high
- Recommended for drilling pegs, not screwing in by hand

## TIE STRAP

CODE: SUPP25



- Guy rope & heavy duty spring act as shock absorbers
- Blue rope clips for a secure connection
- Fast-action buckle ensures no loose ends
- Adjustable length; 1.5m - 3.0m

## FIX & GO ANCHOR PLATE

CODE: SUPP16



- Anchor plate for securing the awning and ensuring stability
- Lock awning leg into position and secure with Peggy Peg screw-in pegs
- For use on almost all ground types and with most awning and tent pole styles



# PEGGY PEG

## STARTER KIT

CODE: SUPP03



- Complete set-up starter pack
- Presented in a durable canvas bag, with additional space for extra pegs

Contains:

- 30 x standard pegs
- 20 x small pegs
- 1 x combo tool
- 2 x drill bits

Pack dimensions:

80mm (d) x 360mm (w) x 130mm (h)

## 270° AWNING STARTER KIT

CODE: SUPP63



- The essential set up kit for the 270° Awning in all soil types
- Comes in a durable carry bag that is spacious enough to include other Peggy Peg products bought separately

Contains:

- 3 x Screw-in pegs N 20cm
- 3 x Hit-in screw out Hardcore pegs 15cm
- 3 x Screw-in pegs L 32cm
- 3 x Crocodiles Peggy
- 6 x L Hooks
- 3 x N Hooks
- 3 x U-connectors
- 3 x T-connectors
- 1 x Combi alloy tool

Pack dimensions:

250mm (d) x 850mm (w) x 550mm (h)

Weight: 1.4kg





# ROPE & ACCESSORIES

## POLYPROPYLENE ROPE

CODE: 34AC | 4mm coil | 250m

CODE: 34BC | 6mm coil | 250m

CODE: 34DC | 10mm coil | 250m

CODE: 34EC | 12mm coil | 250m

## SILVER ROPE

CODE: 34HR | 4mm reel | 300m

CODE: 34FC | 6mm coil | 250m

CODE: 34FR | 6mm reel | 300m

CODE: 34GC | 8mm coil | 250m

CODE: 34GR | 8mm reel | 200m

CODE: 34IC | 10mm coil | 250m

CODE: 34IR | 10mm reel | 125m

CODE: 34JC | 12mm coil | 250m

CODE: 34JR | 12mm reel | 125m



ROPE REEL

ROPE COIL

## VENETIAN BLIND CORD

CODE: VBB | Black | 3mm (dia.) x 500m (l)

CODE: VBW | White | 3mm (dia.) x 500m (l)



## MINI COILS

CODE: MC1 | 4mm (dia.) x 20m (l)

CODE: MC2 | 6mm (dia.) x 20m (l)



## POLYMER SLIDE

CODE: 32C



- To suit 4mm, 6mm & 8mm rope

## TIMBER SLIDE

CODE: 38G



Dimensions:  
30mm (dia.) x 140mm (l)

## COMBO SLIDE

CODE: 38B

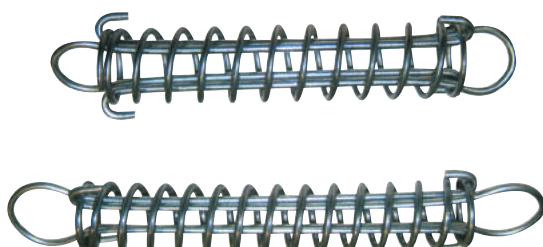


- Plastic slide to suit 4mm & 6mm rope

## TRACE SPRINGS

CODE: 38C | 150mm / 6"

CODE: 38D | 200mm / 8"



## WIRE ROPE SLIDE

CODE: 38H



- To suit 4mm, 6mm & 8mm rope

# SHOCK CORD & ACCESSORIES

## BLACK SHOCK CORD

CODE: SC02 | 2mm (dia.) x 100m (l)  
 CODE: SC03 | 3mm (dia.) x 100m (l)  
 CODE: SC04 | 4mm (dia.) x 100m (l)  
 CODE: SC05 | 5mm (dia.) x 100m (l)  
 CODE: SC06 | 6mm (dia.) x 100m (l)  
 CODE: SC07 | 7mm (dia.) x 50m (l)  
 CODE: SC08 | 8mm (dia.) x 50m (l)  
 CODE: SC010 | 10mm (dia.) x 50m (l)



## SHOCK CORD LOOP

CODE: LP1 | Loop 70mm; Cord 150mm  
 CODE: LP2 | Loop 80mm; Cord 170mm  
 CODE: LP3 | Loop 90mm; Cord 190mm  
 CODE: LP4 | Loop 100mm; Cord 209mm



## FASTENER HOOK

CODE: 66A | 6mm  
 CODE: 66B | 8mm



## SHOCK CORD HOOK

CODE: KB2 | Plastic  
 CODE: KB3 | Metal



## SHOCK CORD KNOB

CODE: KB1



## HOLD TIGHT TARP GRIPPER

CODE: SH038I | Individual  
 CODE: SH038P | Pack of 4  
 CODE: SH038C | Display carton holds  
 15 x Packs of 4



## BUNGEE CORD WITH TOGGLE BALL

CODE: ELO2 | Bulk  
 CODE: ELO2P | Pack of 2, hang sell



- For tying down tarpaulins and/or  
 privacy screens

## ELASTIC SHOCK CORD WITH HOOK

CODE: ESCH | Pack of 2, hang sell  
 CODE: ESCHB | Bulk



- Tension absorber with plastic coated  
 hook





# MAINTENANCE & REPAIR

WEBBING \_\_\_\_\_ 79

HOOK & LOOP TAPE \_\_\_\_\_ 79

CANVAS ACCESSORIES \_\_\_\_\_ 80

STIMEX FABRIC TREATMENT \_\_\_\_\_ 81

TEAR AID \_\_\_\_\_ 82





## WEBBING

### POLY WEBBING & SEAT BELT WEBBING

CODE: PW20 | 20mm (w) x 50m (l)  
CODE: PW25 | 25mm (w) x 50m (l)  
CODE: PW38 | 38mm (w) x 50m (l)  
CODE: PW50 | 50mm (w) x 50m (l)



CODE: SBW25 | 25mm (w) x 100m (l)  
CODE: SBW50 | 50mm (w) x 100m (l)



## HOOK & LOOP TAPE

### BACK TO BACK HOOK & LOOP TAPE

CODE: BB25 | Black | 25mm (w) x 12.5m (l)  
CODE: BB50 | Black | 50mm (w) x 12.5m (l)



## HOOK & LOOP TAPE

### SELF ADHESIVE - 25MM & 50MM

CODE: HSA25BL | Black hook | 25mm (w) x 25m (l)  
CODE: LSA25BL | Black loop | 25mm (w) x 25m (l)  
CODE: HSA25WH | White hook | 25mm (w) x 25m (l)  
CODE: LSA25WH | White loop | 25mm (w) x 25m (l)

CODE: HSA50BL | Black hook | 50mm (w) x 25m (l)  
CODE: LSA50BL | Black loop | 50mm (w) x 25m (l)  
CODE: HSA50WH | White hook | 50mm (w) x 25m (l)  
CODE: LSA50WH | White loop | 50mm (w) x 25m (l)



### SEW ON - 25MM

CODE: HSW25BL | Black hook | 25mm (w) x 25m (l)  
CODE: LSW25BL | Black loop | 25mm (w) x 25m (l)  
CODE: HSW25WH | White hook | 25mm (w) x 25m (l)  
CODE: LSW25WH | White loop | 25mm (w) x 25m (l)

CODE: HSW25BE | Beige hook | 25mm (w) x 25m (l)  
CODE: LSW25BE | Beige loop | 25mm (w) x 25m (l)  
CODE: HSW25GR | Grey hook | 25mm (w) x 25m (l)  
CODE: LSW25GR | Grey loop | 25mm (w) x 25m (l)

### SEW ON - 50MM

CODE: HSW50BL | Black hook | 50mm (w) x 25m (l)  
CODE: LSW50BL | Black loop | 50mm (w) x 25m (l)  
CODE: HSW50WH | White hook | 50mm (w) x 25m (l)  
CODE: LSW50WH | White loop | 50mm (w) x 25m (l)

CODE: HSW50BE | Beige hook | 50mm (w) x 25m (l)  
CODE: LSW50BE | Beige loop | 50mm (w) x 25m (l)  
CODE: HSW50GR | Grey hook | 50mm (w) x 25m (l)  
CODE: LSW50GR | Grey loop | 50mm (w) x 25m (l)

# CANVAS ACCESSORIES

## SIDE RELEASE BUCKLES

CODE: SRB19 | 19mm

CODE: SRB25 | 25mm

CODE: SRB38 | 38mm

CODE: SRB50 | 50mm



## TRIGLIDES

CODE: 66C | 19mm

CODE: 66D | 25mm

CODE: 66E | 38mm

CODE: 66F | 50mm



## LADDER LOCK

CODE: 66G | 19mm

CODE: 66H | 25mm



## D RINGS

CODE: DR1 |  
3.2mm (dia.) x 25mm (w) x 21mm (d)

CODE: DR2 |  
5mm (dia.) x 25mm (w) x 23mm (d)

CODE: DR3 |  
6mm (dia.) x 25mm (w) x 38mm (d)

CODE: DR4 |  
6mm (dia.) x 25mm (w) x 46mm (d)



## VERTICAL T TOGGLE WITH METAL FLIPPER

CODE: 66NW | White

CODE: 66NB | Black

CODE: 66NWD | White, double

CODE: 66NBD | Black, double



## HORIZONTAL T TOGGLE WITH METAL FLIPPER

CODE: 66OW | White

CODE: 66OB | Black

CODE: 66OWD | White, double

CODE: 66OBD | Black, double



## CANVAS TO CANVAS T TOGGLE WITH METAL FLIPPER

CODE: 66IW | White

CODE: 66IB | Black

CODE: 66IWD | White, double

CODE: 66IBD | Black, double



# STIMEX FABRIC TREATMENT

## WATERPROOFER

CODE: STWB | Liquid, 500mL



- High concentrate textile coating for fabric treatment
- Permanently elastic and breathable
- Can be applied to moist fabric
- Dilutes to 4L; covers 20m<sup>2</sup>

## OUTDOOR SPRAY

CODE: STOS | Spray can, 500mL



- For use on outer of outdoor clothing made from waterproof, windproof and breathable fabrics
- Also suited for use on other outdoor clothing, e.g. fleece and shoes
- Silicone free for ventilation

## LEAK REPAIR

CODE: STPR | Liquid, 80mL



- Leak repair for punctures and holes in PVC and vinyl
- Can be used underwater
- Includes applicator brush

## CAMPER CLEANER

CODE: STCC | Liquid, 500mL



- For use in caravans, campers, boats, cars and interiors, barbeques, garden furniture
- Removes algae, tar, insects, dirt etc.
- Environmentally friendly

## TENT CLEANER

CODE: STTC | Liquid, 500mL



- Detergent for tents, garden parasols, sun shades, awnings, boat sails, chair cushions
- Removes seasonal soiling
- Environmentally friendly
- Treats approx. 50m<sup>2</sup> of material (e.g. canvas, cotton, dralon, acrylic, nylon, polyester, PVC coatings)

## SEAM SEALER

CODE: STSS | Liquid, 85mL



- Waterproofing compound for use on inside of seams
- Includes applicator brush



# TEAR AID



## TYPE A

### Gold:

- Original general repair
- For canvas, rubber and aluminium

## TYPE B

### Green:

- For vinyl & vinyl coated materials

### Blue:

- For vinyl seats on bicycles, boats etc.

### Yellow:

- For inflatables, including air beds



Canvas



Rubber



Aluminium



Vinyl



Vinyl seats



Inflatables

## RETAIL PACK

- Includes 1 x 75mm (w) x 300mm (l) piece
- Plus additional small patches



CODE: TAO | TYPE A Gold



CODE: TAV | TYPE B Green



CODE: TAB | TYPE B Blue



CODE: TAY | TYPE B Yellow

# TEAR AID

## WORKSHOP PACK

CODE: TAO2 | TYPE A Gold

CODE: TAV2 | TYPE B Green

- Includes 1 x 75mm (w) x 1500mm (l) roll



## LARGE ROLL / TEAR AID ROLL

CODE: TAO3 | TYPE A Gold

CODE: TAV3 | TYPE B Green

- Includes 1 x 150mm (w) x 9.1m (l) roll







# BEDDING

**AIR BEDS** 85

**SELF INFLATING MATTRESSES** 85

**SLEEPING BAGS** 86



## AIR BEDS

## SELF INFLATING MATTRESSES

### VELOUR AIR BEDS

CODE: AIRB1 | Single | 185cm (l) x 76cm (w) x 22cm (d)  
 CODE: AIRB2 | Twin | 188cm (l) x 99cm (w) x 22cm (d)  
 CODE: AIRB3 | Double | 191cm (l) x 137cm (w) x 22cm (d)  
 CODE: AIRB4 | Queen | 203cm (l) x 152cm (w) x 22cm (d)

- SID Valve (Smart Inflation/Deflation)
- Coil beam construction
- PVC base
- Velour top



### DELUXE OFF ROAD 4WD MAT

CODE: AB501 | Single | Inflated, 195cm (l) x 60cm (w) x 6cm (d)  
 CODE: AB502 | Mega | Inflated, 195cm (l) x 80cm (w) x 6cm (d)  
 CODE: AB503 | Mega Plus | Inflated, 195cm (l) x 100cm (w) x 6cm (d)  
 CODE: AB506 | Twin | Inflated, 195cm (l) x 120cm (w) x 6cm (d)  
 CODE: AB504 | Double | Inflated, 195cm (l) x 130cm (w) x 6cm (d)  
 CODE: AB505 | Queen | Inflated, 195cm (l) x 150cm (w) x 6cm (d)

- Self inflating with non-slip base
- Fully bonded with Micro Peach Skin polyester surface and CFC-free foam
- Large top seam valves for superior inflation & deflation
- Two year warranty
- Includes carry bag & compression straps



### HIKER SELF INFLATING MAT

CODE: AB507

- Single person self inflating mattress, perfect for hikers
- Includes carry bag
- R Value: 3.2
- Weight: 880g



Dimensions:  
 185cm (l) x 53cm (w) x 35cm (d)

# SLEEPING BAGS

## EVADE 15

CODE: SUP68099



- Two designs available
- 'S' shape quilting
- Ideal temperature range: 7° ~ 11°
- Shell fabric: 170T polyester
- Lining fabric: 170T polyester
- Padding: 170g/m<sup>2</sup> hollow fibre

## EVADE 10

CODE: SUP68100



- Elastic straps
- Pillow included
- Circular shape quilting
- Ideal temperature range: 3° ~ 8°
- Shell fabric: 190T polyester
- Lining fabric: 190T polyester
- Padding: 220g/m<sup>2</sup> hollow fibre

## EVADE 0

CODE: SUP68101



- Two designs available
- Pillow included
- One way zipper
- Circular shape quilting
- Elastic straps
- Ideal temperature range: 4° ~ 8°
- Shell fabric: 190T polyester
- Lining fabric: 190T polyester
- Padding: 300g/m<sup>2</sup> hollow fibre

# SLEEPING BAGS

## HIBERHIDE 10

CODE: SUP68102



- Two designs available
- Oblique line quilting on front; straight quilting on back
- Semi-circular hood for head support and insulation
- One way zipper
- Ideal temperature range: 6° ~ 10°
- Shell fabric: 170T polyester
- Lining fabric: 170T polyester
- Padding: 170g/m<sup>2</sup> hollow fibre

## HIBERHIDE 5

CODE: SUP68103



- Oblique line quilting on front; straight quilting on back
- Semi-circular hood with drawstring for head support and insulation
- Insulating draft protection along two way zipper
- Anti-cold shoulder flap
- Ideal temperature range: 3° ~ 8°
- Shell fabric: 210T polyester
- Lining fabric: 190T polyester
- Padding: 250g/m<sup>2</sup> hollow fibre

## HIBERHIDE 0

CODE: SUP68104



- Oblique line quilting on front; straight quilting on back
- Semi-circular hood with drawstring for head support and insulation
- Insulating draft protection along two way zipper
- Anti-cold shoulder flap
- Ideal temperature range: -4° ~ -1°
- Shell fabric: 210T polyester, rib-stop
- Lining fabric: 190T polyester pongee
- Padding: 150g/m<sup>2</sup> double layer, hollow fibre





# FURNITURE

**ACTION CHAIRS** 89

**DIRECTORS CHAIRS** 90

**FOLDING CHAIRS** 91

**FOLDING STOOLS** 92

**TABLES** 93



# ACTION CHAIRS

## KIDS ACTION CHAIR

CODE: 23KS



- Children's sized action chair
  - Made from durable 600D PVC fabric
  - Features mesh cup holder
  - Includes carry bag
  - Each carton contains 3 x pink and 3 x green chairs
- Weight Rating: 80kg / Product Weight: 2.0kg

Dimensions:  
- Back rest: 60.5cm  
- Seat height: 31cm  
- Seat area: 33.5cm (d) x 41cm (w)  
Stored Dimensions:  
- 14cm (d) x 16cm (w) x 65cm (h)

## CAMP QUAD CHAIR

CODE: 23L



- Simple, practical, comfortable
  - Made from durable 600D PVC fabric with 19mm powder coated steel frame
  - Features mesh cup holder
  - Includes carry bag
- Weight Rating: 100kg / Product Weight: 2.2kg

Dimensions:  
- Back rest: 91cm  
- Seat height: 44cm  
- Seat area: 50cm (d) x 45cm (w)  
Stored Dimensions:  
- 20cm (d) x 20cm (w) x 108cm (h)

## KING SIZE ACTION CHAIR

CODE: 23K



- High quality king size action chair
  - Made from durable 600D PVC fabric with 19mm powder coated steel frame
  - Features fabric cup holder, side pocket and quilted design
  - Includes carry bag
- Weight Rating: 130kg / Product Weight: 3.5kg

Dimensions:  
- Back rest: 111cm  
- Seat height: 50cm  
- Seat area: 53cm (d) x 59cm (w)  
Stored Dimensions:  
- 23cm (d) x 23cm (w) x 104cm (h)

## SUPER KING SIZE

CODE: 23P



- Made from 600D PVC fabric with 22mm black powder coated steel frame
  - Features insulated cup holder & cooler, bottle opener, padded headrest, adjustable armrests and mesh side pocket
  - Includes carry bag
- Weight rating: 150kg / Product Weight: 6.3kg

Dimensions:  
- Back rest: 109cm  
- Seat height: 46cm  
- Seat area: 51cm (d) x 62cm (w)  
Stored Dimensions:  
- 17cm (d) x 50cm (w) x 80cm (h)

# DIRECTORS CHAIRS

## ALUMINIUM DIRECTORS CHAIR

CODE: 23JA



- Lightweight, polished aluminium frame
- Made from 600D PVC fabric
- Features: foldable side table, cup holder, anti-tip leg design, single piece cover, padded arm rests
- Weight rating: 100kg / Product Weight: 2.9kg

### Dimensions:

- Back rest: 79cm
  - Seat height: 44cm
  - Seat area: 36cm (d) x 50cm (w)
- Stored Dimensions:
- 10cm (d) x 50cm (w) x 80cm (h)

## FOLDING DIRECTORS CHAIR

CODE: 23H



- Large steel directors chair
- Back rest detaches and folds into chair for easy storage
- Made from durable 600D PVC fabric with 25mm black powder coated steel frame
- Features: front and back anti-tip design, foldable side table, cup holder
- Includes carry bag
- Weight Rating: 130kg / Product Weight: 6.5kg

### Dimensions:

- Back rest: 93cm
  - Seat height: 46cm
  - Seat area: 40cm (d) x 57cm (w)
- Stored Dimensions:
- 13cm (d) x 70cm (w) x 47cm (h)

## STEEL DIRECTORS CHAIR

CODE: 23JS



- Black powder coated steel frame directors chair
- Made from durable 600D PVC fabric
- Features: front and back anti-tip leg design, foldable side table, cup holder, single piece cover
- Weight rating: 120kg / Product Weight: 6.3kg

### Dimensions:

- Back rest: 85cm
  - Seat height: 43cm
  - Seat area: 42cm (d) x 47cm (w)
- Stored Dimensions:
- 20cm (d) x 30cm (w) x 85cm (h)



# FOLDING CHAIRS

## FIVE POSITION HARD ARM CHAIR

CODE: 23S



- Hard arm chair
- Back rest tilts to 5 different positions
- Made from 600D PVC fabric with 22mm black powder coated steel frame
- Features: anti-tip leg design, cup holder, wine glass holder
- Weight Rating: 130kg / Product Weight: 6.0kg

Dimensions:

- Back rest: 105cm
  - Seat height: 46.5cm
  - Seat area: 47cm (d) x 49cm (w)
- Stored Dimensions:
- 13cm (d) x 60cm (w) x 98cm (h)

## BEACH CHAIR

CODE: 23B



- Made from hard-wearing 600D PVC fabric with 22mm steel powder coated frame
- Features: foldable design, built-in towel rail (on back, not seen)
- Weight Rating: 100kg

Dimensions:

- Folded: 10cm (d) x 45cm (w) x 82cm (h)
- Unfolded: 60cm (d) x 45cm (w) x 60cm (h)

## COLLAPSIBLE CHAIR

CODE: 23G



- Ultralight collapsible chair
- Made from 600D Oxford cloth with high strength aluminium alloy frame
- Features: easy assembly, foldable legs, scientifically structured design
- Weight Rating: 150kg

Dimensions:

- 51cm (d) x 57cm (w) x 65cm (h)
- Fits into carry bag - 11cm (d) x 15cm (w) x 36cm (l)

# FOLDING STOOLS

## TRI LEG STOOLS

CODE: 21E | CODE: 21F



21E



21F

### 21E

- 19mm steel legs
- 600D PVC fabric cover
- Weight rating: 100kg / Product Weight: 0.9kg
- Dimensions:
- Seat: 30cm (d) x 30cm (w)
- Stool height: 50cm
- Stored Dimensions:
- 7cm (d) x 8cm (w) x 58cm (h)

### 21F

- 19mm steel legs
- 600D PVC fabric cover
- Weight rating: 100kg / Product Weight: 1.4kg
- Dimensions:
- Seat: 33cm (d) x 33cm (w)
- Stool height: 65cm
- Stored Dimensions:
- 7cm (d) x 8cm (w) x 77cm (h)

## HOOP LEG STOOL

CODE: 21B | CODE: 21C



### 21B

- Galvanised 19mm steel frame
- Canvas cover {colours vary}
- Dimensions:
- Stool height - 41cm
- Seat area - 22cm (d) x 31cm (w)

### 21C

- Galvanised 19mm steel frame
- Canvas cover {colours vary}
- Dimensions:
- Stool height - 45cm
- Seat area - 28cm (d) x 34cm (w)

## CHAIRETTE

CODE: 23D



- Galvanised 19mm steel frame
- Canvas cover {colours vary}

### Dimensions:

- Stool height - 40cm
- Seat area - 32cm (d) x 33cm (w)

# TABLES

## UTILITY TABLE

CODE: 31K



- Portable & lightweight
- Easy to carry, quick to set up
- Aluminium frame with MDF top
- Folding legs
- Folds flat for the space conscious traveller

Dimensions:  
38cm (d) x 53cm (w) x 64cm (h)  
Product Weight: 2.5kg

## PERSONAL TABLE

CODE: 31M



- Blow-moulded for superior strength
- Folds flat for the space conscious traveller
- Four adjustable height positions
- Stable on various surfaces
- Steel legs, 19mm dia.

Dimensions:  
50cm (d) x 77cm (w)  
Heights: 12cm, 50cm, 63.5cm, 74cm  
Product Weight: 5.0kg

## LIGHTWEIGHT TABLE

CODE: 31G



- Classic camping table, easy to carry and assemble
- Folding legs for compact storage
- Aluminium frame with MDF top

Dimensions:  
60cm (d) x 80cm (w) x 70cm (h)  
Product Weight: 3.6kg

## FOLD IN HALF TABLE

CODE: 31F



- Sturdy fold in half table
- Aluminium frame with MDF top
- Includes carry bag
- Features: removable mesh shelf, height adjustable legs up to 70cm

Dimensions:  
120cm (w) x 60cm (d) x 70cm (h)  
Product Weight: 5.3kg

## SMALL FOLD IN HALF TABLE

CODE: 31S



- Lightweight fold in half table
- Aluminium frame with MDF top
- Small & compact for efficient use of space

Dimensions:  
39.5cm (d) x 60cm (w) x 40cm (h)  
Product Weight: 2.0kg

## SLAT TABLE

CODE: 31D



- Lightweight aluminium slat table
- Folds into compact carry bag

Dimensions:  
70cm (d) x 70cm (w) x 70cm (h)  
Product Weight: 3.0kg





# COOKWARE

**DUTCH OVENS** 95

**TRIPODS** 95

**FRYING PANS** 96

**SAUCEPANS** 97

**JAFFLE IRONS** 97

**TOASTERS** 97

**GAS FITTINGS** 98

**ZEBRA STAINLESS STEELWARE** 99

**WATER CONTAINERS** 102

**FUEL CONTAINERS & ACCESSORIES** 103



## DUTCH OVENS

## TRIPODS

### DUTCH OVENS - PRE SEASONED

CODE: DO25 | 2.5 quart  
CODE: DO45 | 4.5 quart

CODE: DO90 | 9 quart  
CODE: DO100 | 10 quart

CODE: DO120 | 12 quart  
CODE: DO160 | 16 quart



### DUTCH OVEN LID LIFTER

CODE: DOL1



Dimensions: 425mm (l)

### TRIPODS

CODE: TP3 | 10mm (dia.) x 900mm (h)  
CODE: TP4 | 10mm (dia.) x 1200mm (h)

CODE: TP5

**TP3**  
- Solid steel  
- Includes carry bag

**TP4**  
- Solid steel  
- Includes carry bag



- Multipurpose; can be used with frypans, skillets, ovens, woks and saucepans  
- Folds flat for easy storage  
- Includes carry bag

# FRYPANS

## GRIDDLE PANS

- Pre-seasoned with a wooden handle and griddle base

CODE: FPFH1 | Rectangular |  
210mm (w) x 350mm (d)

CODE: FPFH2 | Round | 240mm dia.

CODE: FPFH3 | Square |  
240mm (w) x 240mm (d)



## ROUND

- Pre-seasoned with wooden screw-in handle

CODE: FP9 | Round | 220mm dia.  
CODE: FP11 | Round | 280mm dia.  
CODE: FP12 | Round | 300mm dia.



## SQUARE

CODE: FP10 | Square, griddle base | 250mm (w) x  
250mm (d)





## SAUCEPANS

## JAFFLE IRONS

## TOASTERS

### SAUCEPANS

CODE: SP2 | Two quart  
CODE: SP3 | Three quart

- Pre-seasoned with wooden handle



### JAFFLE IRONS

CODE: JISL | Single | 130mm (w) x 140mm (d)  
CODE: JIDL | Double | 275mm (w) x 140mm (d)

- Pre-seasoned with metal clasp and wooden handle

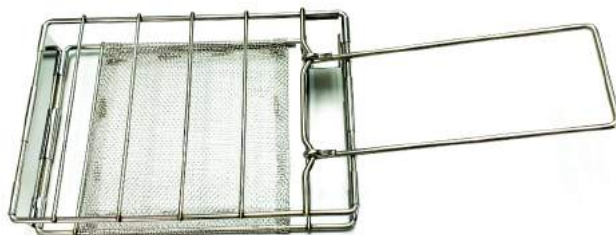


### SINGLE SLICE TOASTER

CODE: MBSTT

- Single slice box toaster

Dimensions:  
110mm (d) x 165mm (w) x 30mm (h)



### FOUR SLICE TOASTER

CODE: M4SLT

- Four slice box toaster

Dimensions:  
200mm (dia.) x 15mm (h)  
Assembled height - 220mm



# GAS FITTINGS

## RP4W600

CODE: RP4W600



- Hose gas PVC 8mm x 600mm
- 1/4 2kg / hr POL regulator

## RP4W900

CODE: RP4W900



- Hose gas PVC 8mm x 900mm
- 1/4 2kg / hr POL regulator

## CC56LG

CODE: CC56LG



- Leg with screw for single, dual & triple country cooker

## AC24

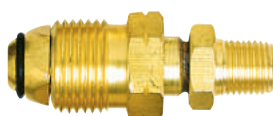
CODE: AC24



- Adaptor companion 3/8 BSPM
- LH x Pol Male 90°

## AC18

CODE: AC18



- Adaptor 1/4 BSPM x Pol Male

## AC10

CODE: AC10



- Adaptor companion 3/8 BSPF
- LH x Pol Female

## AC19A

CODE: AC19A



- Adaptor companion 3/8 BSP
- LH x Pol Male

## AC27

CODE: AC27



- Adaptor 1/4 BSPF x 3/8 SAEM for BBQ and ring burners

## AC30

CODE: AC30



- O Ring for Pol
- Pack of 3

## AC10A

CODE: AC10A



- Adaptor companion 3/8 BSPF
- LH x Pol Female 90°

## AC31

CODE: AC31



- Rubber nose cone Pol regulator
- Pack of 3

## AC05A

CODE: AC05A



- Adaptor 1/4 BSPM x 1/4 BSPM

## AC05B

CODE: AC05B



- Adaptor 1/4 BSPM x 3/8 BSPM

## AC20

CODE: AC20



- Adaptor elbow 90° 1/4 BSPM x 1/4 BSPF

## AC35

CODE: AC35



- Adaptor quick connect 3/8 SAEF x 3/8 SAEM

# ZEBRA STAINLESS STEELWARE

## MUG

CODE: SUP110007 | 7cm d. | 250mL  
 CODE: SUP110008 | 8cm d. | 400mL  
 CODE: SUP110009 | 9cm d. | 500mL  
 CODE: SUP110010 | 10cm d. | 750mL



## MUG WITH LID

CODE: SUP110108 | 8cm d. | 400mL  
 CODE: SUP110109 | 9cm d. | 500mL  
 CODE: SUP110110 | 10cm d. | 750mL



## BILLY

CODE: SUP113114



- Billy style tea pot with seamless interior, fitted lid, folding handle and slotted spout  
 - 14cm diameter | 2.0L capacity

## WHISTLING KETTLE

CODE: SUP113524 | 3.5L capacity



## LOOP HANDLE POT

CODE: SUP151612 | 12cm d. | 1.4L  
 CODE: SUP151614 | 14cm d. | 2.0L  
 CODE: SUP151616 | 16cm d. | 3.0L





# ZEBRA STAINLESS STEELWARE

## CAMPING SET

CODE: SUP184211



- Three piece camping set with carry bag
- Includes two pots (one with folding handle) and frying pan with folding handle

Dimensions:

Pot with handle - 14cm dia., 1.2L capacity

Pot with folding handle - 16cm dia., 1.7L capacity

Frying pan with folding handle - 16cm dia., 700ml capacity

## STOCK POT

CODE: SUP171228



- For use on all stoves
- 28cm diameter
- 17.2L capacity

## PLATE

CODE: SUP120020 | 20cm d.

CODE: SUP120023 | 23cm d.



## BOWL

CODE: SUP111014 | 14cm d. | 800mL

CODE: SUP111018 | 18cm d. | 1.6L



# ZEBRA STAINLESS STEELWARE

## LUNCH BOX

CODE: SUP152016



- Rectangular lunch box
- Includes round inner box

Dimensions:  
16cm (l) x 12.5cm (w) x 5.8cm (h)  
780ml capacity

## ROUND LUNCH BOX

CODE: SUP152312 | 12cm d. | 700mL  
CODE: SUP152314 | 14cm d. | 1.1L



## TIERED LUNCH BOX

CODE: SUP152042



- Two tier oval lunch box
- Includes inner box
- Sturdy lock, foldable handle

Dimensions:  
14cm diameter | 1.1L capacity

## TIERED FOOD CARRIER

CODE: SUP150103 | 10cm dia.  
| Three tier food carrier  
CODE: SUP150122 | 12cm dia.  
| Two tier food carrier  
CODE: SUP150142 | 14cm dia.  
| Two tier food carrier



# WATER CONTAINERS

## PLASTIC BASINS

CODE: PCR  
CODE: PCS

### PCR | ROUND BASIN

Dimensions:  
- 30mm (dia.) x 120mm (h)  
- Volume: 8L

### PCS | RECTANGULAR BASIN

Dimensions:  
- 300mm (d) x 360mm(w) x 120mm (h)  
- Volume: 9L



## COLLAPSIBLE CONTAINER

CODE: CWC10 | Volume: 10L  
CODE: CWC20 | Volume: 20L



## WATER CUBES

CODE: PC15 | Volume: 15L



- Made from food grade HDPE  
- BPA free

CODE: PC20 | Volume: 20L



- Made from food grade HDPE  
- BPA free

CODE: PC25 | Volume: 25L



- Made from food grade HDPE  
- BPA free

## WATER JERRY CANS

CODE: AT5 | Volume: 5L  
CODE: AT10 | Volume: 10L



- Made from food grade HDPE  
- BPA free

CODE: AT20 | Volume: 20L



- Made from food grade HDPE  
- BPA free

CODE: AT20G | Volume: 20L | Heavy Duty



- Made from food grade HDPE  
- BPA free



# FUEL CONTAINERS & ACCESSORIES

## FUEL DRUMS

CODE: J5 | Volume: 5L  
CODE: J10 | Volume: 10L



- Fully approved fuel container

CODE: J20C | Volume: 20L | Red  
CODE: J20F | Volume: 20L | Yellow



- Fully approved fuel container; red  
- Fully approved diesel container; yellow

## UNIVERSAL ON/OFF TAP

CODE: PCT



## CAP AEROFLOW TAP

CODE: PCAFC



- To suit water cube

## ON/OFF SNAP TAP

CODE: SNT | Single item  
CODE: SNT1 | Prepacked



## BUNG AEROFLOW TAP

CODE: PCAFB



- To suit water cube and/or jerry can

## UNIVERSAL BUNG

CODE: PCB



## DRUM SPANNER

CODE: SPA



- Assists opening water cube caps & bungs

## CAP

CODE: PCC



- To suit water cube

# BEACH & SHELTERS

INFLATABLE RIDERS 105

BOAT SETS 108

PUMPS & ACCESSORIES 109

OAR SETS 109

TENTS & SHELTERS 110



# INFLATABLE RIDERS

## MUD MASTER SWIM RING

CODE: SUP36106



- Colour shield printing
- Sturdy pre-tested vinyl construction
- Includes safety valve

Dimensions:  
Inflated - 91cm dia.

## HIGH VELOCITY TYRE TUBE

CODE: SUP36102



- Realistic tyre printing
- Sturdy pre-tested vinyl construction
- Heavy duty handles
- Includes repair patch
- Includes safety valve

Dimensions:  
Inflated - 119cm dia.

## SINGLE SEAT LUXURY INFLATABLE

CODE: SUP43116



- Inflata-Shield™ material resists puncture, limits stretching and enhances grip
- Premium construction includes backrest & wraparound grab rope
- Cool mesh bottom
- Heavy duty handles
- Two cup holders
- Interlocking quick release valves
- Includes repair patch
- Weight Rating: 90kg

Dimensions:  
Inflated - 122cm (dia.) x 48.5cm (h)  
Deflated - 135cm (dia.)



# INFLATABLE RIDERS

## ALPINE COOLER TUBE

CODE: SUP43398



- Wrap around grab rope with built in grommets
- Premium construction with back rest
- Cool mesh bottom
- Includes insulated cooler bag
- One cup holder
- Weight Rating: 90kg

Dimensions:

Deflated - 169cm (l) x 137cm (d)

Inflated - 159cm (l) x 53cm (w) x 126cm (d)

## DOUBLE SEAT INFLATABLE RIDER

CODE: SUP43113



- Inflata-Shield™ material resists puncture, limits stretching and enhances grip
- Premium construction includes backrest & wraparound grab rope
- Pliable mesh bottom
- Built-in inflatable cooler & storage compartment
- Heavy duty handles
- Interlocking quick release valves
- Includes repair patch
- Weight Rating: 180kg

Dimensions:

Inflated - 122cm (d) x 240cm (w) x 50cm (h)

Deflated - 132cm (d) x 251cm (l)

## SUN SOAKER FLOATING PLATFORM

CODE: SUP43542



- Inflata-Shield™ material resists puncture, limits stretching and enhances grip
- Extra wide pillows on either end
- Four Clasp 'N Go™ connectable buckles for linking multiple platforms together
- Interlocking quick release valves
- Includes repair patch
- Weight Rating: 360kg

Dimensions:

Inflated - 269cm (d) x 183cm (w) x 25cm (h)

Deflated - 290cm (d) x 191cm (l)

# INFLATABLE RIDERS

## SOL VENTURE MESH LOUNGE

CODE: SUP43540



- Inflata-Shield™ material resists puncture, limits stretching and enhances grip
- Premium construction includes headrest
- Cool mesh bottom
- One cup holder
- Includes repair patch
- Weight Rating: 90kg

Dimensions:

Inflated - 188cm (d) x 109cm (w) x 46cm (h)

Deflated - 198cm (d) x 119cm (l)

## INDIGO WAVE LOUNGE

CODE: SUP43533



- Inflata-Shield™ material resists puncture, limits stretching and enhances grip
- Premium construction includes headrest and armrests
- One cup holder
- Includes repair patch
- Weight Rating: 90kg

Dimensions:

Inflated - 183cm (d) x 97cm (w) x 53cm (h)

Deflated - 191cm (d) x 107cm (l)

## INDIGO WAVE DOUBLE LOUNGE

CODE: SUP43534



- Inflata-Shield™ material resists puncture, limits stretching and enhances grip
- Premium construction includes headrest and armrests for each lounger
- Two cup holders
- Interlocking quick release valve
- Includes repair patch
- Weight Rating: 180kg

Dimensions:

Inflated - 183cm (d) x 176cm (w) x 56cm (h)

Deflated - 196cm (d) x 193cm (l)



# BOAT SETS

## SINGLE SEAT BOAT SET

CODE: BT1



- Single seat inflatable boat; inflatable floor for comfort
- Features: tow ring & tow rope, built-in grommets
- Weight Rating: 80kg

Dimensions:  
107cm (w) x 165cm (l)

## DOUBLE SEAT BOAT SET

CODE: BT2



- Double seat inflatable boat; inflatable floor for comfort
- Features: tow ring & tow rope, built-in grommets, oar clasps
- Includes oar set & foot pump

Dimensions:  
115cm (w) x 197cm (l)



## PUMPS & ACCESSORIES

### 12V AIR PUMP

CODE: PP1

- 12V Pump



### 240V AIR PUMP

CODE: PP2

- 240V Pump



### PUSH/PULL PUMP

CODE: PP4

- Push/pull pump, 13000CC  
- Inflates/deflates on up/down stroke



### FOOT BELLOWS

CODE: PP3

- Foot bellows, 5000CC



### PLASTIC OAR SET

CODE: OAR1



- Plastic oar set with ribbed blade  
- Three section structure for easy assembly

### ALUMINIUM OAR SET

CODE: OAR2



- Sectional aluminium oar set  
- Can be used as one twin blade paddle; 2.18m (l)  
- OR two single blade paddles, each 1.45m (l)

# TENTS & SHELTERS

## COOL QUICK 2 TENT

CODE: SUP68097



- Single layer pop up tent
- One entrance, 3 ventilation openings
- One pole structure for easy pitching and folding
- Set up time: 3 mins
- Capacity: 2 people
- Fabric: 180T polyester PU coated
- Ground protection: 110g/m² PE
- Guy rope: polyester



## COOL DOME 3 TENT

CODE: SUP68085



- Single layer
- One entrance
- Set up time: 8 mins
- Capacity: 3 people
- Fabric: 190T polyester PU coated
- Ground protection: 110g/m² PE
- Guy rope: polyester



## COOL MOUNT 2 TENT

CODE: SUP68086



- Single layer pop up tent
- One entrance, 2 side windows
- Set up time: 3 mins
- Capacity: 2 people
- Fabric: 190T polyester PU coated
- Ground protection: 120g/m² PE
- Guy rope: polyester



# TENTS & SHELTERS

## COOL MOUNT 4 TENT

CODE: SUP68087

- Single layer pop up tent with improved ventilation
- One entrance, two side windows
- Setup time: 3 mins
- Capacity: 4 people
- Fabric: 190T polyester PU coated
- Ground protection: 120g/m<sup>2</sup> PE



## ACTIVE MOUNT 3 TENT

CODE: SUP68090

- Double layer, double entrance, stocking area with extra floor
- Set up time: 15 mins
- Capacity: 3 people
- Outer tent fabric: 190T polyester PU coated
- Inner tent fabric: 190T breathable polyester
- Ground protection: 120g/m<sup>2</sup> PE
- Guy rope: polyester





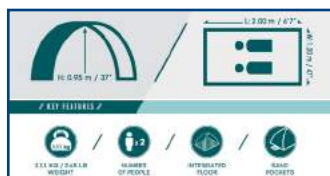
# TENTS & SHELTERS

## BEACH TENT

CODE: SUP68105

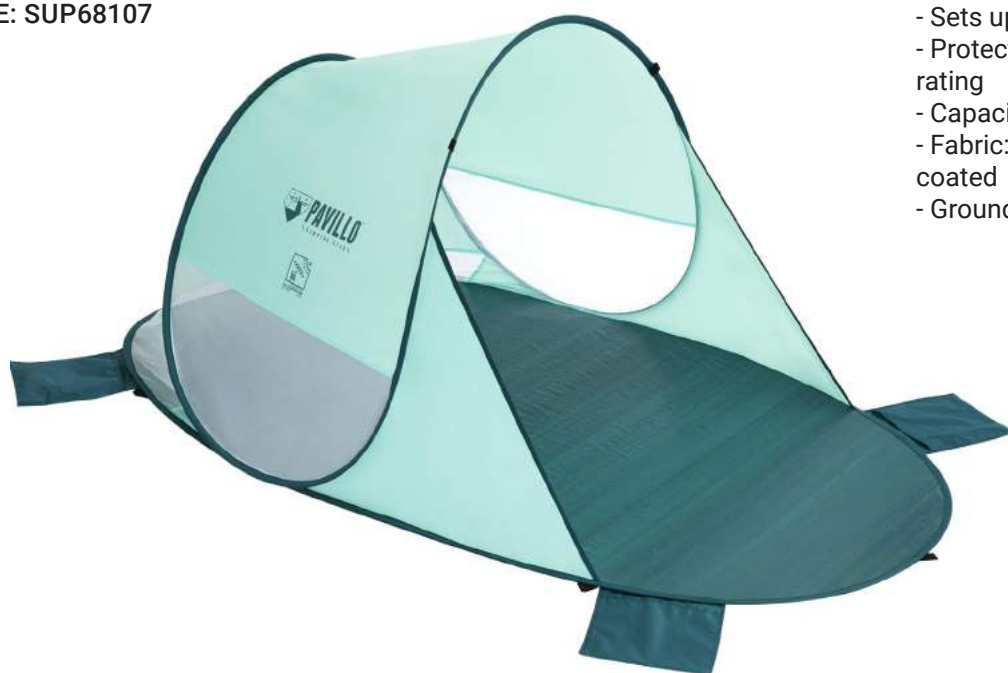


- Simple set up
- includes carry bag for easy transport
- Capacity: 2 people
- Fabric: 190T polyester PA coated
- Ground protection: 100g/m<sup>2</sup> PE



## SECURA BEACH TENT

CODE: SUP68107



- Sets up in seconds
- Protection from sun with UPF40+ rating
- Capacity: 2 people
- Fabric: 190T polyester PA silver coated
- Ground protection: 120g/m<sup>2</sup> PE



# TENTS & SHELTERS

## RAMBLE X2 TENT

CODE: SUP68001



- Easy to set up and convenient to carry
- Capacity: 2 people
- Fabric: 170T polyester PA coated
- Ground protection: 110g/m<sup>2</sup> PE



## STATION PORT CHANGING STATION

CODE: SUP68002



- Offers privacy by the beach, lake or pool
- Two side windows and removable floor drain
- Capacity: 1 person
- Fabric: 170T polyester PA Coated
- Ground protection: 110g/m<sup>2</sup> PE







# CAMPSITE ACCESSORIES

## SHOWERS

115

## COOLER BAGS

115

## CAMPING IMPLEMENTS

116

## CAMPS 11 BOOKS

117



## SHOWERS

## COOLER BAGS

### SHOWERS

CODE: SOL1 | Solar Shower | Capacity: 20L

CODE: 41BSC | Canvas bucket shower with plastic rose | Capacity: 20L

CODE: 40BSC | Canvas bucket | Capacity: 20L

CODE: 80BR | Plastic rose, 80mm dia.



SOL1



41BSC



40BSC



80BR

### COOLER BAGS

CODE: SUPCB68036 | Volume: 15L

CODE: SUPCB68037 | Volume: 25L



SUPCB38036



SUPCB38037

#### SUPCB38036

- Thermally insulated cooler bag
- Interior stays cool for approx. 5 hours
- Sturdy handles for easy carrying
- Folds flat
- Made from 100% polyester
- Volume: 15L

Dimensions:

190mm (d) x 350mm (w) x 200mm (h)

#### SUPCB68037

- Thermally insulated cooler bag
- Interior stays cool for approx. 4 hours
- Sturdy handles for easy carrying
- Folds flat
- Made from 100% polyester
- Volume: 25L

Dimensions:

260mm (d) x 420mm (w) x 260mm (h)

# CAMPING IMPLEMENTS

## SHOVELS

CODE: SHV1 | Fixed handle shovel | Wooden handle, 750mm (l)

CODE: SHV2 | Tri-fold metal handle shovel | Includes carry bag



SHV1



SHV2

## MALLET

CODE: MAL



- Stone hammer
- Weight: 1.2kg
- Fibreglass handle, 230mm (l)

## CAMPING HATCHET

CODE: HTC1



- Camping hatchet
- Weight: 0.6kg
- Fibreglass handle, 300mm (l)

## MINI SPLITTER

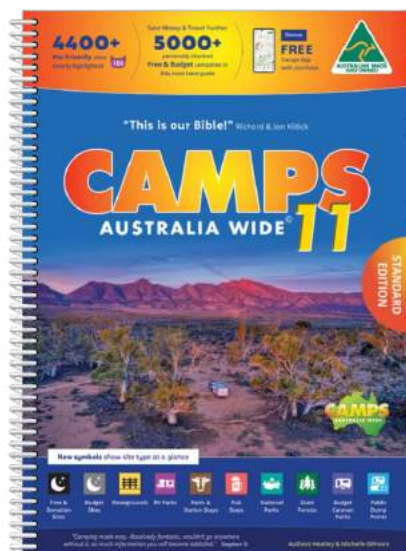
CODE: MISP



- Mini block splitter / stone hammer
- Weight: 1.75kg
- Fibreglass handle, 330mm (l)

# CAMPS 11 BOOKS

## CAMPS 11 AUSTRALIA WIDE



CODE: C11A4 | Camps 11 Australia Wide - A4 size

CODE: C11B4 | Camps 11 Australia Wide - B4 size

- Definitive guide to low-cost camping across Australia
- Identify site types by symbol
- Includes fold out map of Australia
- Updated site listings including dump points, facilities, free and paid sites, powered and non-powered sites, pet allowances
- Ring bound and printed in Australia
- Features HEMA road atlas maps, with GPS coordinates and street addresses
- State by state indexation

*Note: B4 size contains images of every campsite*

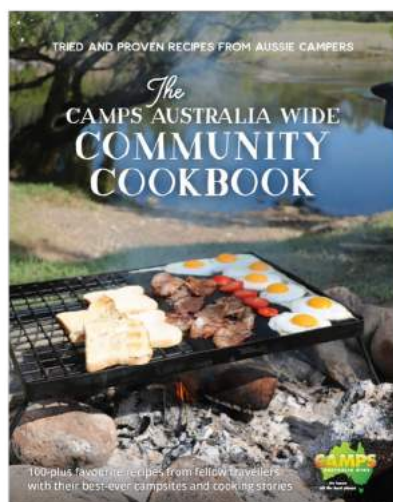
## CARAVAN PARKS 5



CODE: CPA4 | Caravan Parks 5 Australia wide - A4 size

- Comprehensive yet concise caravan parks guide
- Over 2,220 tourist and caravan parks listed and verified
- Each site listing contains detailed location and facility information
- Includes fold out map of Australia
- Features HEMA road atlas maps and GPS coordinates
- Perfect for use in conjunction with the Camps 11 books
- Printed and ring bound in Australia

## CAMPS COMMUNITY COOKBOOK



CODE: CACC | Camps Community cookbook

- The perfect kitchen companion on all adventures
- A uniquely Australian cookbook full of tried and true recipes generously provided by the CAMPS community
- Versatile range of recipes for camp ovens, BBQs, gas stoves, microwaves, thermal and slow cookers
- Features contributors 'best ever' campsites and caravan parks, recommended 'must see and do' and camp memories and stories
- Printed in Australia

Dimensions:  
190mm (w) x 245mm (h)



# INDEX

## A

A-type bearing set p31  
Action chairs p89  
Adjustable accessories p29  
Adjustable gas bottle holder p33  
Adjustable legs p28  
Adjustable stands p28  
Air beds, velour p85  
Air pumps p109  
Aired, Folding p10  
Alpine cooler tube p116  
Aluminium directors chair p90  
Aluminium foot p29  
Aluminium spreader bars p65  
Aluminium tent poles p64  
Annexe Matting, Caravan p18  
Anode p49  
Awning bracket p40  
Awning light-PC p51  
Awning rope clip pack p38  
Awning rope clips p38  
Awning rope cradle box pack p38  
Awning rope cradle pair p38  
Awning rope cradle pole pack, black p39  
Awning rope cradle pole pack, white p39  
Awning tensioner p40

## B

B-type bearing set p31  
Bag, Electrical Lead p9  
Bag, Hose Large p9  
Bag, Hose Small p9  
Bag, tent peg p73  
Bag, tent pole p73  
Bargman style p51  
Basins p102  
Basket, Collapsible p17  
Beach & Shelters p104  
Beach chair p91  
Bearings p31  
Bedding p84  
Billy tea pot, Zebra p99  
Bird beak & plate p67  
Block, Safety power p49  
Boat sets p108  
Bonus drop privacy screen p41  
Bow ends p68  
Bow knuckle p67  
Bow mount p67  
Bow shackles p31  
Bowl, Collapsible p15  
Bright bar light p50  
Bucket, Collapsible p17  
Bungee cord p77

## C

Camlok p68  
Camp & outdoors p56  
Camp blue, Stimex p46  
Camp flush, Stimex p46  
Camp green, Stimex p46  
Camp quad chair p89  
Camp soft p47  
Camper cleaner p81

Camping hatchet p116  
Camping set, Zebra p100  
Camps community cookbook p117  
Camps11 Australia wide p117  
Campsite Accessories p114  
Canvas accessories p80  
Canvas bucket pg 115  
Canvas bucket shower p115  
Canvas to canvas T toggle p80  
Caravan accessories p22  
Caravan Annexe Matting p18  
Caravan awning & accessories p34  
Caravan awning safety straps p40  
Caravan filter p23  
Caravan fridge screen p43  
Caravan leads p49  
Caravan parks Australia wide p117  
Caravan sink plug p22  
Cassette tank cleaner p47  
Chairette p92  
Clamp p27  
Clip on towing mirror p22  
Clothes Airers p10  
Clothesline, Easy Hang p10  
Clothesline, Pegless p10  
Coils, mini p76  
Colander, Collapsible p15  
Collapsible chair p91  
Collapsible Containers p14,102  
Collapsible Cookware p16  
Combination lamps, Rear p54  
Combination lamps, Slimline p53  
Combination lamps, Slimline rear pg 52  
Combo slide p76  
Cookbook, Camps community p117  
Cookware p94  
Cooler bags p115  
Coupling lock, Twin p31  
Curved roof rafters p36  
Curved roof rafters, Spare parts p37

## D

D rings p80  
D shackles p31  
De flapper p40  
Deluxe offroad 4WD mat p85  
Directors chairs p90  
Dish Drainer, Collapsible p15  
Display box, Pop top support bar p21  
Double seat inflatable rider p106  
Drinking water hose fittings p8  
Drinking water hose p8  
Dual axle wheel chock p7  
Dual axle wheel levelling ramp p7  
Dutch oven lid lifter p95  
Dutch ovens p95

## E

Easy fit towing mirror p22  
Easy hang clothesline p10  
Elastic shock cord with hook p77  
Electrical & 12V p48  
Electrical lead bag p9  
End wall privacy screen p41  
Ensuite p44  
Evade sleeping bags p86



WHITEHAVEN BEACH,  
WHITSUNDAYS, QLD

# INDEX

Extension tent poles p75  
Exterior led lighting p54  
External pole cap p83

## F

Fastener hook p77  
Fiamma privacy screen p43  
Filter, Caravan p23  
First aid kit p23  
Fittings, Drinking water hose p8  
Fittings, Sullage hose p9  
Five position hard arm chair p91  
Flat plug, 7 pin p49  
Flat socket, 7 pin p49  
Fold in half table p93  
Folding ailer p10  
Folding chairs p91  
Folding directors chair p90  
Folding stools p92  
Foot bellows p109  
Foot, Aluminium p29  
Foot, Plastic p29  
Fridge screen, Caravan p43  
Frypan, Collapsible p16  
Frypans p96  
Fuel drums p103  
Furniture p88

## G

Gas bottle holders p33  
Gas bottle holders, Adjustable p33  
Gas fittings p98  
Griddle pans p96

## H

Hair dryer p49  
Hair straightener p49  
Hand pump, Sink p23  
Handle roll pin p27  
Hatchet, Camping p116  
Hiberhide sleeping bags p87  
High velocity tyre tube p105  
Hiker self inflating mattress p85  
Hold tight tarp gripper p77  
Hook & loop tape p79  
Hook, Shock cord p77  
Hoop leg stool p92  
Horizontal T toggle p80  
Hose bag, Large p9  
Hose bag, Small p9  
Hose, Drinking water fittings p8  
Hose, Drinking water p8  
Hose, Sullage fittings p9  
Hose, Sullage p8

## I

Indigo wave double lounge p107  
Indigo wave lounge p107  
Inflatable riders p105  
Interior led lighting p50  
Internal pole cap p67

## J

Jack pad, Caravan p30  
Jack pad, Stacker p30  
Jaffle irons p97  
Jayco, Pop top support bar p21  
Jerry can holders p32  
Jockey wheel holder, Large p27  
Jockey wheels p25

## K

Kettle, Collapsible p16  
Kids action chair p89  
King size action chair p89  
Knob, Shock cord p77

## L

Ladder lock p80  
Ladder strap, Rubber p40  
Large hose bag p9  
Large jockey wheel holder p27  
Large rubber wheel holder p27  
Leads, Caravan p49  
Leak repair p81  
Led lighting p52  
Led lighting, Exterior p51  
Led lighting, Interior p50  
Legs, Adjustable p28  
Level, RV block set p7  
Levelling ramp, Dual axle p7  
Levelling ramp, Single axle p7  
Lid lifter, Dutch oven p95  
Lightweight table p93  
Long wall privacy screen p41  
Loop handle pot, Zebra p99  
Loop, Shock cord p77  
Lunch box round, Zebra p101  
Lunch box, Zebra p101  
Luxury inflatable, Single seat p105

## M

Magazine holder p22  
Maintenance & Repair p78  
Mallet p116  
Marker lamps p55  
Marquee pole p61  
Matting, Caravan Annexe p18  
Metal slides p71  
Mini coils p76  
Mini splitter p116  
Mirror, Clip on towing p22  
Mirror, Easy fit towing p22  
Mounting brackets p21  
Mud master swim ring p105  
Mug, Zebra p99  
Mug, Zebra with lid p99

## N

Number plate lamp p51

## O

Oar sets p109  
Outdoor spray p81  
Oyster light p50

## P

Peggy peg p74  
Pegless clothesline p10  
Personal table p93  
Pin for replacement foot p29  
Plastic foot p29  
Plastic pole ground plate p68  
Plastic sand pegs p72  
Plastic slides p71  
Plastic snap clip p67  
Plastic tent pegs, Hang sell pg73  
Plug, 7 pin flat p49  
Plug, Caravan sink p22  
Pole clamp p68  
Pole holder p20  
Poly webbing p79  
Polymer slide pg76  
Polymer slides p71  
Polypropylene rope pg76  
Pop top privacy screen p42  
Pop top support bar display box p21  
Pop top support bar jayco p65  
Pop top support p21  
Porta pak toilet chemical p45  
Portable toilet p47  
Privacy screen, Bonus drop p42  
Privacy screen, End wall p41  
Privacy screen, Fiamma p43  
Privacy screen, Long wall p41  
Privacy screen, Pop top p43  
Privacy screens p41  
Puller, Tent peg p73  
Pump, Sink hand p23  
Pumps & accessories p109

## Q

Quick action clamp p68

## R

Reading light p50  
Rectangle containers- Four pack p14  
Rectangle Containers- Two pack p14  
Retail pack, Tear Aid p82  
Roll, Tear Aid p83  
Roof rafter end p37  
Roof rafter end p37  
Roof rafters, Curved p36  
Roof rail bracket p68  
Roof rails p63  
Rope clip pack, Awning p38  
Rope clips, Awning p38  
Rope cradle, Awning packs p38,39  
Rope cradle, Awning pair p38  
Rope slide, Wire p76  
Rope, White & silver p76  
Ropes & pegs p70  
Round containers- Four pack p14  
Rubber ladder strap p40



# INDEX

Rubber ring p33  
 Rubber tyre p27  
 Rubber wheel holder p27  
 Rubber wheel holder, Large p27  
 Rubber wheel, Solid p27  
 RV & Trailer Hardware p24  
 RV Essentials & Accessories p6  
 RV Level block set pg7

## S

Sachets, Toilet chemical p45  
 Safety power block p49  
 Safety straps, Caravan awning p40  
 Saucepan, Collapsible p15  
 Saucepans p97  
 Seam sealer p81  
 Seat belt webbing p79  
 Secura bar p35  
 Secura bar spigot end p37  
 Secura bar, Spare parts p37  
 Self adhesive rolls p79  
 Self inflating mattresses p85  
 Shackles, Bow p31  
 Shackles, D p31  
 Shelters p110  
 Shock cord hook p77  
 Shock cord knob p77  
 Shock cord loop p77  
 Shock cord p77  
 Shovels p116  
 Shower, Canvas bush p115  
 Shower, Solar p115  
 Side release buckles p80  
 Single axle wheel levelling ramp p7  
 Single seat boat set p108  
 Single seat inflatable p105  
 Sink hand pump p23  
 Sink plug, Caravan p22  
 Slat table p93  
 Sleeping bags p86  
 Slides p71  
 Slimline combination lamps p52  
 Small fold in half table p93  
 Small hose bag p9  
 Snap clip, Plastic p67  
 Socket, 7 pin flat p49  
 Sol venture mesh lounge p107  
 Solar shower p115  
 Solid rubber wheel p27  
 Spigot dome & spring p68  
 Spigot dome p68  
 Spigot end p41  
 Spigot p66  
 Spigot tip p41  
 Spigot, 6mm pin p66  
 Spigot, bent p66  
 Spigot, hook bent p66  
 Spigot, jayco bent p66  
 Spigot, long p66  
 Spigot, S bend p66  
 Spigot, solid aluminium p66  
 Spigot, threaded p66  
 Splice clip p68  
 Splitter, mini p116  
 Spreader bars p62  
 Spreader bars, Aluminium p65

Spring button clip p68  
 Square bow end p68  
 Square c clip support clip p67  
 Stainless steelware, Zebra p99  
 Stands, Adjustable p28  
 Starter packs, Caravan p11  
 Steel directors chair p90  
 Steel tent pegs p72  
 Steps, Caravan p12  
 Stimex cassette tank cleaner p47  
 Stimex fabric treatment p81  
 Stimex toilet chemical liquid p46  
 Stimex water tank cleaner p47  
 Stock pot, Zebra p100  
 Sullage Hose Fittings p9  
 Sullage Hose p8  
 Sun soaker floating platform p106  
 Super king size action chair p89  
 Suremat p19  
 Swag pole p60  
 Swim ring, Mud master p105  
 Swivel rail light p50

## T

T level p22  
 T nut & thumbscrew p37  
 T toggle, Canvas to canvas p80  
 T toggle, Horizontal p80  
 T toggle, Vertical p80  
 Tables p93  
 Taps, water & fuel containers p103  
 Tarps, Tornado p69  
 Tear Aid p82  
 Tent cleaner p81  
 Tent peg bag p73  
 Tent peg puller p73  
 Tent pegs, Plastic sand p72  
 Tent pegs, Steel p72  
 Tent pole accessories p66  
 Tent pole bag p73  
 Tent Poles & Spreader Bars p58  
 Tent poles p59  
 Tent poles, Aluminium p64  
 Tents p110  
 Tie down kit p43  
 Tiered food carrier, Zebra p101  
 Tiered lunch box, Zebra p101  
 Timber slides p76  
 Toasters p97  
 Toilet chemical liquid, Stimex p46  
 Toilet chemical sachets p45  
 Toilet paper, Camp soft p47  
 Toilet, Portable p47  
 Tornado tarps p69  
 Tour & RV p5  
 Towing mirror, Clip on p22  
 Towing mirror, Easy fit p22  
 Trace springs p76  
 Trailer accessories p31  
 Tri leg stools p92  
 Triglides p80  
 Tripods p95  
 Tubs, Collapsibles p17  
 Twin coupling lock p31  
 Tyre, Rubber p27

## U

Ultra slim light p50  
 Utility table p93

## V

Velour air beds p85  
 Venetian blind cord p76  
 Vertical T toggle p80

## W

Wash tub/Sink, collapsible p17  
 Water containers p102  
 Water cubes p102  
 Water jerry cans p102  
 Water tank cleaner p47  
 Water, Drinking hose p8  
 Waterproofoer p81  
 Webbing, Poly p79  
 Wheel chock p7  
 Wheel chock, Dual axle p7  
 Wheel levelling ramp, Dual axle p7  
 Wheel levelling ramp, Single axle p7  
 Wheel ramps & Chocks p7  
 Wheels, Jockey p27  
 Whistling kettle, Zebra p99  
 White & silver rope p79  
 Window bracket p67  
 Wire rope slide p76  
 Workshop pack, Tear Aid p83

## X

—

## Y

—

## Z

Zebra stainless steelware p99



## PHOTOGRAPHY ATTRIBUTIONS

Mount Little, Flinders Ranges, SA | p.2 | [Megan Clark on Unsplash](#)  
Wineglass Bay Beach, Freycinet, TAS | p.4 | [Lochlainn Riordan on Unsplash](#)  
Great Otway National Park, VIC | p.6 | [Gryffyn M on Unsplash](#)  
Portsea, VIC | p.24 | [Pat Whelan on Unsplash](#)  
Nethercote, NSW | p.35 | [Jack Bassingthwaighe on Unsplash](#)  
Naturaliste, WA | p.44 | [Courtne Tosana on Unsplash](#)  
Hamilton, VIC | p.48 | [Hamish Weir on Unsplash](#)  
Devils Marbles, Kata Tjuta, NT | p.56 | [Karl Hedin on Unsplash](#)  
Coast Track, Royal National Park, NSW | p.58 | [Andreas Dess on Unsplash](#)  
Blue Mountains, NSW | p.70 | [Quentin Grignet on Unsplash](#)  
Pond, Great Otway National Park, VIC | p.78 | [Gryffyn M on Unsplash](#)  
High Country, VIC | p.84 | [Hayden Del-Perro on Unsplash](#)  
Cooks Beach, TAS | p.88 | [Tim Lippis on Unsplash](#)  
Purling Brook Falls, Springbrook National Park, QLD | p.94 | [Lochlainn Riordann on Unsplash](#)  
Point Addis, Bells Beach, VIC | p.104 | [Gryffyn M on Unsplash](#)  
Mount Gibraltar Reserve, Bowral, NSW | p.114 | [Jack Bassingthwaighe on Unsplash](#)  
Whitehaven Beach, Whitsundays, QLD | p.118 | [Lochlainn Riordann on Unsplash](#)  
Breakaways, Stuart Highway, Coober Pedy, SA | p.121 | [Christian Bass on Unsplash](#)



BREAKAWAYS, STUART HIGHWAY, COOBER PEDY, SA

The background of the entire page is a photograph of a beach and sky. A large, diagonal, olive-green band cuts across the image from the top-left towards the bottom-right. The sky is a clear, light blue, and the beach is a pale, sandy color. In the bottom-left corner, there is a white geometric shape that looks like a stylized triangle or a corner cut-off.

**PHONE: 02 4823 6001  
FREECALL: 1800 805 826  
EMAIL: SALES@SUPEX.COM.AU**

**DISTRIBUTORS OF  
QUALITY PRODUCTS FOR  
THE CARAVAN & LEISURE  
INDUSTRY**

**9 LOCKYER STREET  
GOULBURN NSW 2580  
PO BOX 215  
GOULBURN NSW 2580**